



# COMPANY PROFILE

301A & 302A, Lorong Selangor, Taman Melawati,  
53100 Kuala Lumpur, Wilayah Persekutuan.

+603 4149 6195 / +603 4162 5731

[www.iktisas.com.my](http://www.iktisas.com.my)

2025

OVERVIEW OF COMPANY AND PROJECT EXPERIENCES



**BIM**  
Ready



## TABLE OF CONTENT

<b>01</b>	<b>THE COMPANY</b>	4
<b>02</b>	<b>OUR SCOPE OF SERVICES</b>	13
<b>03</b>	<b>SELECTED PROJECTS</b>	31
<b>04</b>	<b>LIST OF PROJECTS</b>	110
<b>05</b>	<b>CERTIFICATES &amp; AWARDS</b>	122
<b>06</b>	<b>CLIENTELE</b>	125



## MESSAGE FROM THE CHAIRMAN'S OFFICE

The advent of generative AI and use of Building Information Modelling (BIM) are among the new tools that new generation engineers must master. However, the basic principles of engineering have stood the test of times and all more important to ensure that analytical logic applies at all stages of planning and engineering processes.

We at Iktisas Ingenieurs believe in delivering top quality and prompt services to our Clients. We seek to continuously improve our team's skillset and invest in latest technology resources to best serve our Clients in their project developments.

We understand the best value that our Clients demand in their quest for maximum business viability with the need to balance the Environmental, Social and Sustainability concerns that are required by our modern society.

Only as a team can we move forward with clear objectives and successful project completion.

**IR.HJ WAN AHMAD NIZAR ZAKARIA**  
*Executive Chairman / CEO*

### IKTISAS INGENIEURS GROUP OF COMPANIES

We are organised into several key areas of specialisation to better serve our Clients, not only collaborating as a team but also operate independently as separate entities tailored to the individual project needs and Client’s portfolio:

#### IKTISAS PLANNERS

covers the wide scope of Urban and Environmental Planning services.

#### HYDEC

focuses on the wave, coastal studies and specialised aspects of river hydraulics and flood plain analysis.

#### IKTISAS MANAGEMENT NETWORK

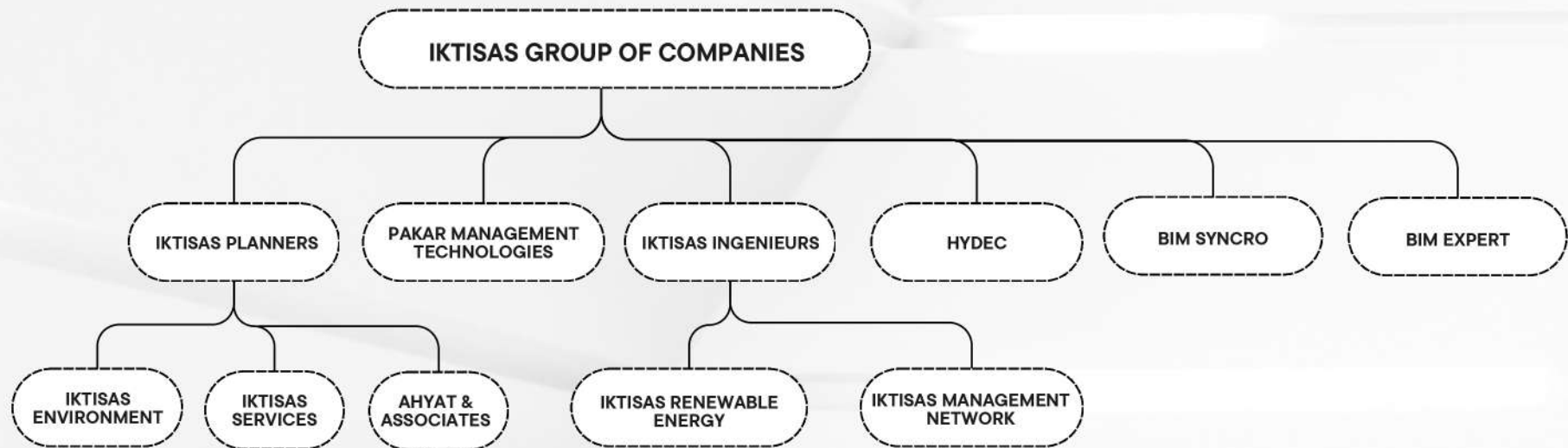
is an accredited company under MOF for Project Management Services and now covers design management for Iktisas.

#### IKTISAS INGENIUEURS SDN BHD

provides the basic Civil, Structure, Mechanical and Electrical services. New area of service scope includes renewable energy and hydrogen fuels.

#### PAKAR MANAGEMENT TECHNOLOGY

is a one-stop setup for pollution, wastewater studies, water treatment and environmental engineering solutions.



# BOARD OF DIRECTOR



**IR.HJ WAN AHMAD  
NIZAR ZAKARIA**

EXECUTIVE CHAIRMAN / CEO



**DATO' IR. HJ.  
HUSNI HUSSAIN**

DEPUTY CHAIRMAN / DIRECTOR



**IR.SHAHRIMAN  
IBRAHIM**

DIRECTOR ( CIVIL & STRUCTURE )



**IR. SYED ABDULLAH  
SYED AHMAD**

DIRECTOR ( MECHANICAL )



**IR. MUHAMMAD HANAPI  
MAT JAMIL**

DIRECTOR ( ELECTRICAL )

# ASSOCIATE DIRECTOR



**Capt (R) AZMAN AHMAD**

Project Management



**Dr. MUHAMMAD ZULHUSNI IZZAT**

Renewable Energy



**Ir. MUHAMMAD AKHIR OTHMAN**

HYDEC



**Prof. Dr. AZNI IDRIS**

Sewerage & Pollution Treatment (PMT)



**Ir. Ts. Gs. NOOR AZLEE IZANI**

Building Information Modeling (BIM)



**Br. SYAFIEE BIN MOHD RAFFEE**

Building Information Modeling (BIM)



**TPr. Hj MD NAZRI MOHD NOORDIN**

Urban Planning (IKTISAS PLANNERS)



**TPr. JUWAIRIYAH HO ABDULLAH**

Urban Planning (IKTISAS PLANNERS)

# OUR DESIGN TEAM



**Ir. SITI WAN  
MARHAMAH ZAID**  
Senior Civil Engineer



**RAJA ABDUL WAFI  
RAJA ABDULLAH**  
Senior Civil Engineer



**Ms. NOOR  
ZULIZAH AZUDIN**  
Senior Civil Engineer



**Ms. SOLEHAH  
AMINUDIN**  
Senior Civil Engineer



**Ms. MADURA MOHD**  
Senior Utilities  
(Civil) Engineer



**Dr. MUSTAFA  
HASAN ABDULLAH**  
Senior Geotechnical Engineer



**Ms. HANNAH  
FATHIAH MD SIDEK**  
Senior Drainage  
Engineer



**Mr. KHAIRUL  
AZMI MARWAN**  
Senior Electrical  
Engineer



**Ms. ASMA' ZAHIR**  
Senior Electrical  
Engineer



**Ms. ANITA IBRAHIM**  
Senior Structural  
Engineer



**Mr. MD ZAMRI  
MD ISMAIL**  
Senior Road Engineer



**Mr. SAIFUL  
HAZMI KAMAIN**  
Senior Quantity Surveyor

# OUR TECHNICAL PARTNERS



**Ir. AMIT SEN GUPTA**

Railway Trackwork  
(Sekhon Consulting)



**Ir. SHAHKANDER  
SINGH SEKHON**

Rail Geometrics  
(Sekhon Consulting)



**Mr. MOHAMAD  
IZZUDDIN HASAN**

Railway Systems  
(Perunding Eagles)



**Ir. LIM LEE CHENG**

Railway Systems  
(Perunding Eagles)



**Ir. RUSMAN ABU  
SAMAH**

Petrochemical & Process Engineering  
HAZOP, HAZID & SIL Facilitator  
(PDH Technical Services)



**Ms. ROZILAH  
IBRAHIM**

Environmental Impact Studies  
(Gloden Global Technology)

# OUR PROJECT MANAGEMENT TEAM



**Ir. Hj. WAN LOKMAN  
WAN YUSOFF**

Senior Project Manager



**Mr. MUHAMMAD  
NAZRIL LAHARADI**

Senior Project Manager



**Ir. Hj. KAMARULZAMAN  
RAHMAD**

Senior Project Manager



**Ir. Hj. KAMARUZAMAN  
NORMAN**

Senior Project Manager



**MUHAMMAD  
BIN SALLEH**

Senior Project Manager



**MOHAMMAD  
LOFTI BIN AYOB**

Senior Project Manager

## OUR MANAGEMENT TEAM



The management team is a hands-on set of professionals in their respective areas of specialisation. We operate as a managed task-force combining skill and experience from various departments and associates firms working cohesively together in fulfilling the project objectives and scheduling.

Our key people have been together for many years and we have a proven team that have successfully completed significant projects throughout our 35 years of operation.

Technical collaboration has no borders and current technology allows for efficient information workflows that are truly global.

We now look forward to expand into Process Engineering and Renewable Energy sectors backed by the technical expertise of our International partners.

## COMPANY PHILOSOPHY

---

- 1 Providing **competitive, high quality and client centred services.**
- 2 Adherence to the **highest standards of integrity.**
- 3 Fostering **teamwork and skills integration** between the various disciplines.
- 4 Applying **state-of-the-art technology** to our products, processes and services.
- 5 Building **smart partnership and collaborations** to achieve technical excellence.
- 6 To **exceed the expectations of our clients** through continuous improvements in quality, service, productivity and project scheduling.
- 7 **Preservation of the environment** and adherence to health and safety regulations.

# OUR SCOPE OF SERVICES

02

# Our Services

Road and Highways

Structural Design

Building Services

Housing and Development Infrastructure

Drainage and Irrigation

Bridge Design

Coastal Protection, Ports and Jetties

Geotechnical Engineering

Project and Development Management

Building Information Modeling (BIM)

Power Generation and Transmission

Urban Planning and Environmental

Renewable Energy

Railway Engineering

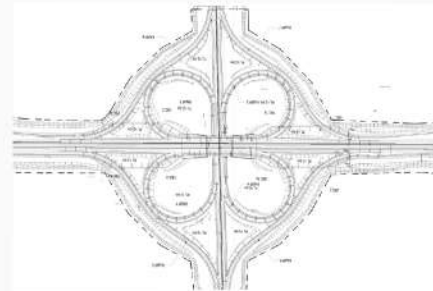
Independent Check Engineer (ICE)

Pollution and Wastewater Engineering

**ROAD AND  
HIGHWAYS**



- | Traffic Studies and Transportation Planning
- | Basic Design for Design Build Project
- | Road and Pavement drainage systems
- | Traffic light systems
- | Traffic Furniture and Road marking to JKR and LLM Standards
- | Feasibility Studies for Road and Highway Projects
- | Tender and Contract Documentation
- | Interchanges and Junctions
- | Motorcycle lanes and Cyclist tracks
- | Street Lighting
- | Detailed Geometrics to JKR and LLM Standards
- | Use of MXRoad and Open Road software for geometric designs



Clover leaf interchange



Penang Second Bridge Crossing



Overall Plan View of East Coast Expressway Phase 2

# BUILDING INFORMATION MODELING

(BIM SYNCRO)

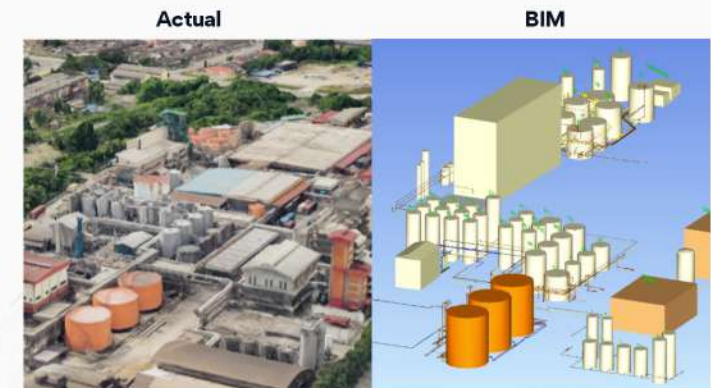


## BIM

- | Architecture
- | Interior Design
- | Civil
- | Structure
- | Geotechnical
- | Mechanical
- | Electrical
- | Plumbing and Piping



Construction of a highway to connect Bukit Kayu Hitam ICQS



Scan to BIM including 3D model for an existing palm oil refinery.

## STRUCTURAL DESIGN



- | Steel Structure design
- | Concrete Structure design
- | Factories, Warehouse and Industrial Buildings
- | Highrise Buildings (up to 30 storeys)
- | Analysis and Design using Industry Leading computer software
- | Wooden Structures, composite and fabric roofs
- | Aircraft hangers and Long-span roof structures
- | Industrial Building Systems (IBS) and Concrete Precast Elements
- | Hospitals, Schools, Universities and public facilities buildings
- | Security Facilities – Military Camps, Police Station, and Fire Station
- | Steel Telecommunication and Power transmission towers
- | Stadium, sport complexes and F1 racing circuit
- | Transport terminals and Multi-storey carparks



Police Camp, Semenyih, Selangor



UIA college accomodation

**BUILDING  
SERVICES**



- | Power supply and electrical distribution system
- | Telephone and communication systems
- | Lifts, escalator, cranes and services platforms
- | Building Automation System (BAS)
- | Public address, security and multi-media systems
- | HVAC system, cold rooms, plumbing and sanitary
- | Genset backup systems
- | Solar power augmentation
- | Special facilities – medical & garbage disposal
- | Lightning protection
- | Fire protection system, lighting and acoustics



PERKESO



Seremban City Centre

## HOUSING AND DEVELOPMENT INFRASTRUCTURE



- | Planning and design of civil infrastructure in new townships
- | Design and submission of Civil and Structural works
- | Electrical and Firefighting systems for Local Authorities approval.
- | Earthworks grading and building platform design
- | Infrastructure drainage conforming to MASMA rules
- | Road and junction designs including roundabouts
- | Erosion control measures for earthworks
- | Water supply and reticulation design
- | Sewerage treatment and reticulation
- | Civil works for industrial and power related facilities
- | Traffic Calming Scheme for Residential and Urban Communities



Infrastructure Works for Precinct 12



Slim River Hospital

## DRAINAGE AND IRRIGATION



- | Water Supplies and Irrigation Studies, Planning and Design
- | Integrated River Basin Management Studies (IRBM)
- | Local and regional drainage network studies and design
- | Flood mitigation – Flood ponds, Tidal gates and River bunds
- | Fish farming fresh and saltwater intake and effluent discharge
- | Dam studies – Dam breaks and discharge-storage capacity analysis
- | Hydraulic studies for bridge location and Major Pipe crossings
- | In-house expertise of MIKE-11, MIKE-21, XPSWMN, XPSTORM, LITPACK, NAM, WMS, MOUSE software
- | River Estuaries Protection studies and design



Flood barrier in Dengkil



Sg Manik drainage & irrigation

## BRIDGE DESIGN



Analysis and design of concrete bridges using MIDAS software

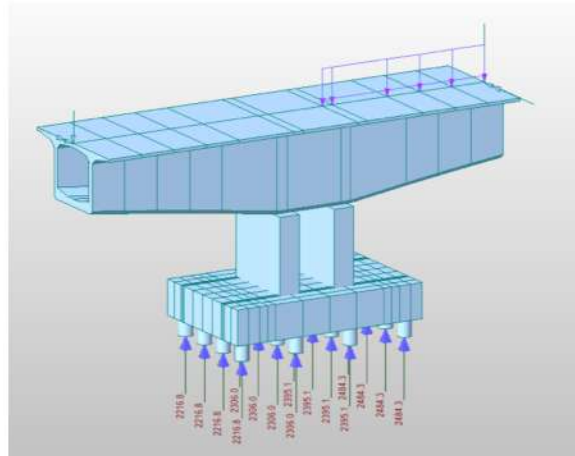
Concrete Flat Slab

Beam-slab bridges

Elevated Structure for Animal Crossing and Flood Basin

Pedestrian Bridge

Concrete Box Girder Bridges



Bridge box girder

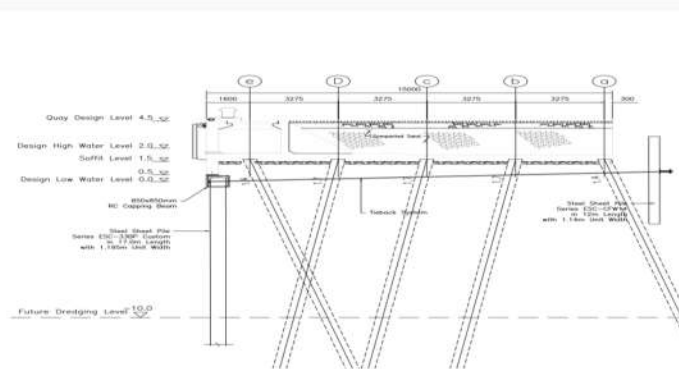


LPT Crossway

# COASTAL PROTECTION, PORTS AND JETTIES



- | Coastal and Wave Studies for Environmental Impact Assessment (HYDEC)
- | Jetty and Marina Design
- | Port and Harbour Design
- | Dredging and Channel Improvement Design
- | Coastal protection design – Groins and Breakwaters (HYDEC)
- | Coastal zone Management
- | Beach Nourishment (HYDEC)
- | Breakwater Design
- | Coastal Reclamation works (HYDEC)



Wharf elevation for Tok Bali Port

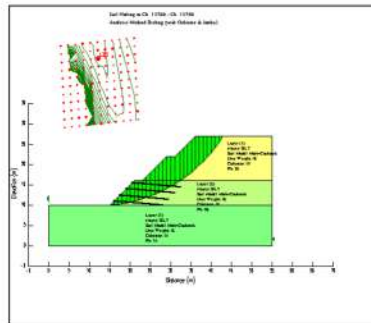


Tok Bali completed site

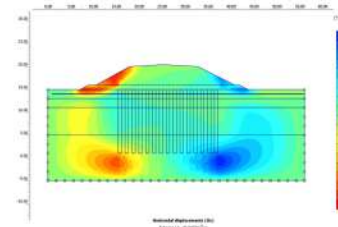
## GEOTECHNICAL ENGINEERING



- | Slope Study, analysis and design using finite element software
- | Design of Soil nail, Reinforced Earth walls and Soil anchors
- | Soil improvement design on soft soils and reclamation works
- | Geotechnical instrumentation
- | Continuous Bore Pile (CBP), RC Walls, Steel Sheet walls and Anchor walls.
- | Deep Basement construction design
- | Small Dams Design
- | Retaining Structures using Gabions, Crib Walls, RE Walls



Slope analysis with soil nail



Soil embankment improvement analysis

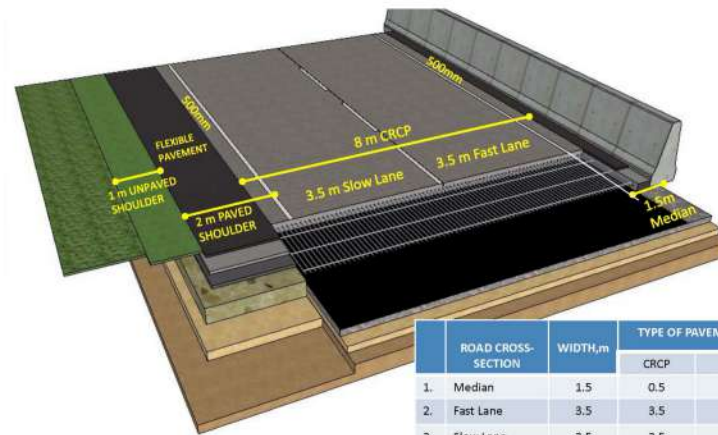


Stone column installation

# PAVEMENT ENGINEERING



- | Pavement testing, evaluation, and analysis
- | Road subgrade stabilisation design
- | Road, Ports, Airport and Racing Circuit
- | Rural road pavement programme
- | Pavement design to JKR and LLM's guidelines
- | Overlay design
- | Concrete Pavement – CRCP, JRCP, PCP and Block pavers



	ROAD CROSS-SECTION	WIDTH,m	TYPE OF PAVEMENT	
			CRCP	F.P
1.	Median	1.5	0.5	1.0
2.	Fast Lane	3.5	3.5	0
3.	Slow Lane	3.5	3.5	0
4.	Paved Sh.	2.0	0.5	1.5



CRCP Pavement structure



Pavement construction

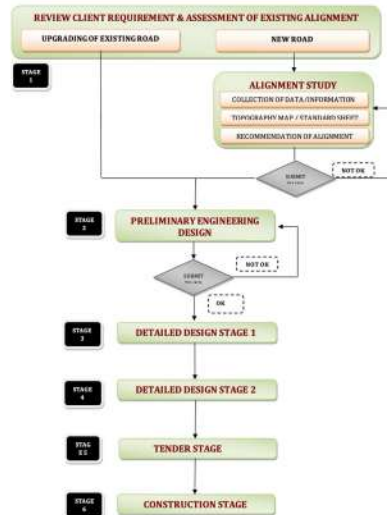


## PROJECT AND DEVELOPMENT MANAGEMENT

(IKTISAS MANAGEMENT SDN BHD)



- | Development Management Office
- | Project Management Consultancy
- | Construction Supervision
- | Design Management
- | Local Consultant Submission (Coordinator) for Foreign Investment
- | University Campus Development



Design process



MASTER PLAN of MSC Cyberport City, Johor, Malaysia

**POLLUTION AND  
WASTEWATER  
ENGINEERING**

(PAKAR MANAGEMENT TECHNOLOGY)



- | Regional Sewerage and Wastewater Study
- | New Sewerage and Industrial Treatment Plant Design
- | Sewerage Treatment Plant Refurbishment Assessment
- | Control of Industrial Major Accident Hazards (CIMAH)
- | Water Supply Treatment Plant Design
- | Chemical Health Risk Assessment (CHRA)
- | Quantitative Risk Assessment (QRA)
- | Local Exhaust Ventilation (LEV)



Sepang F1 sewage treatment plant



University Malaya medical waste treatment

**POWER  
GENERATION AND  
TRANSMISSION**



- | Diesel Genset for Remote Power Supply
- | Electrical power distribution network design
- | Power sub-station - 132/66/33 KV
- | Telecommunication Towers
- | Transmission lines - 275/132/11 KV
- | Power Transmission Towers
- | Transformers, switchgear and cabling design



Sub station



Containerised power generation (6MW)

**URBAN PLANNING  
AND  
ENVIRONMENTAL**

(IKTISAS PLANNERS SDN BHD)



- | Master Planning
- | Development Plans and Studies
- | Environmental Planning
- | Heritage Impact Assessment
- | Social Impact Assessment
- | Conservation Heritage



Palekbang KFA Masterplan



UTEM Concept Masterplan

**RENEWABLE  
ENERGY**



- | Feasibility Studies for Investment
- | Small and Micro Hydro
- | Large Scale Solar Farm
- | Landfill Gas Power Generation
- | Green Hydrogen Power Generation
- | Industrial Solar Roof top design



Green hydrogen plant in Terengganu.

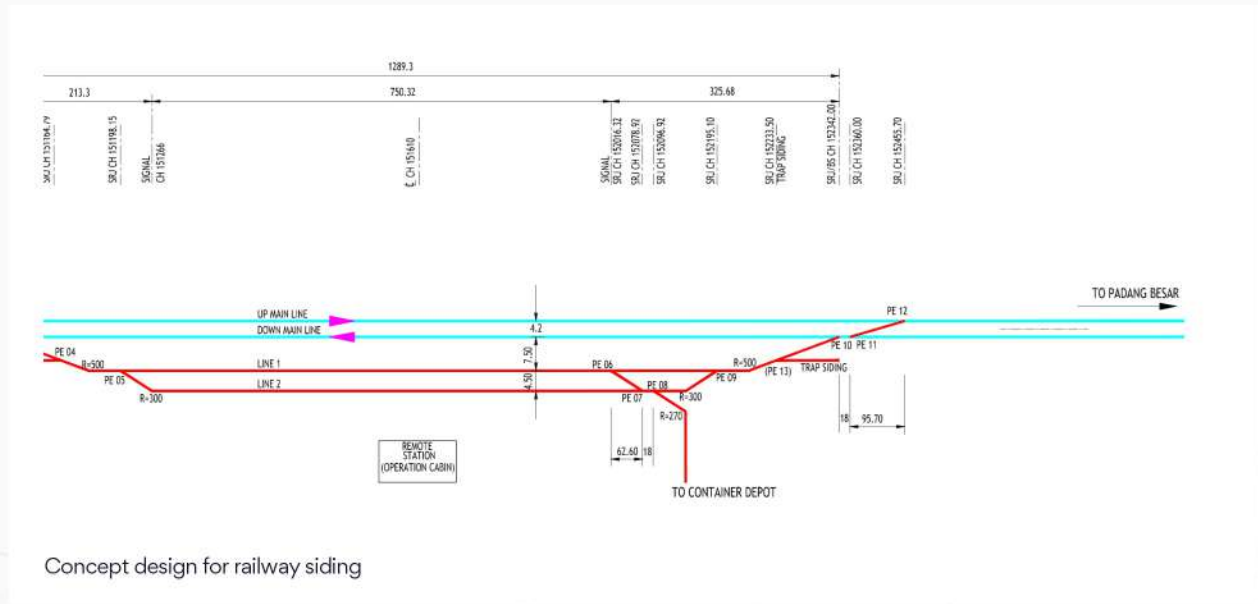


Mini hydro in Sungai Betau, Pahang.

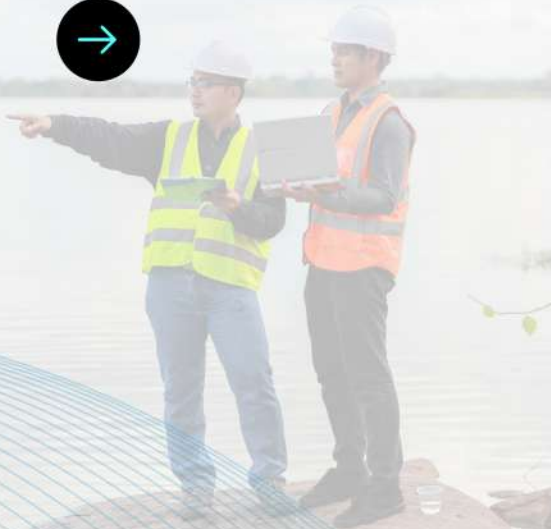
# RAILWAY ENGINEERING



- | Detailed Design for trackwork conforming to KTMB's rules
- | Systems Concept Design
- | Layby for station and Spur Lines
- | Container Cargo rail Facilities for In-land Port
- | Depot facilities for Rail Maintenance



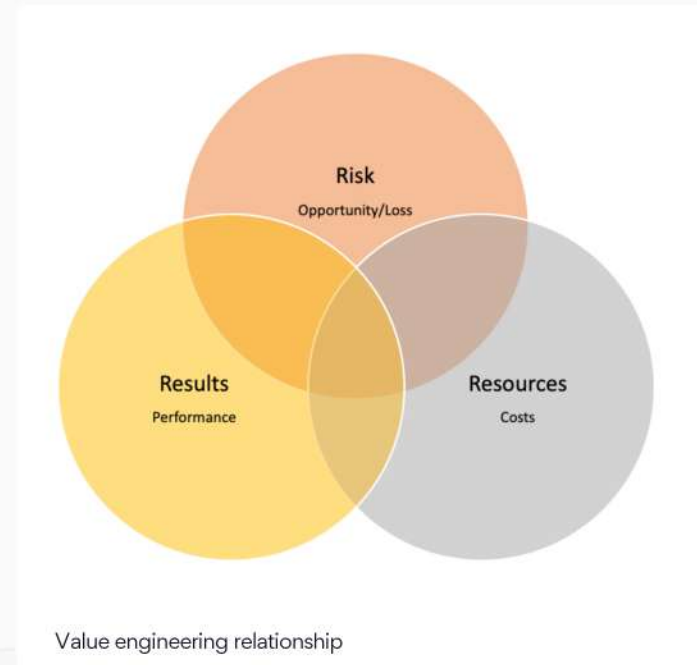
# INDEPENDENT CHECK ENGINEER (ICE)



- | Independent Technical Review
- | Project Financial Drawdown Assessment
- | Value Engineering



Project coordination meeting



Value engineering relationship

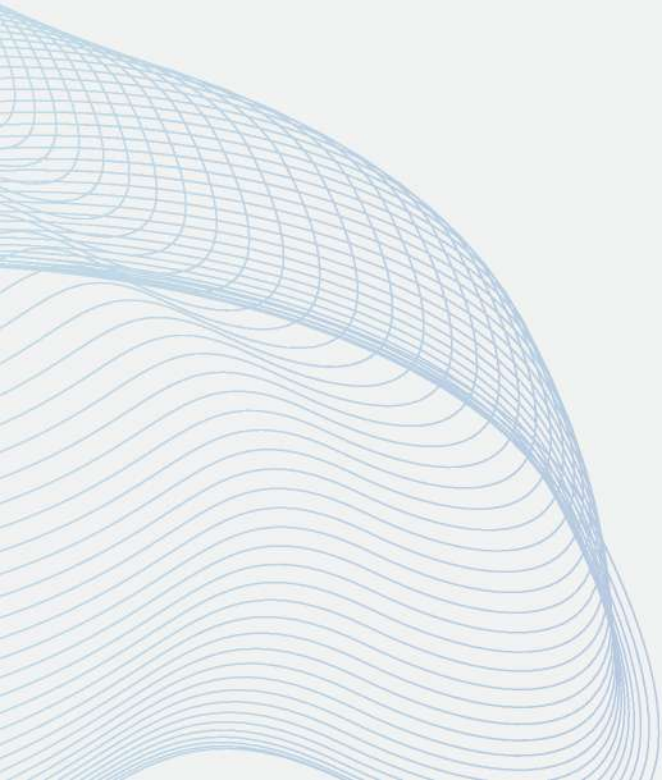


# SELECTED PROJECTS

03

Selected Projects

# ROAD AND HIGHWAYS



**SPECIAL PROJECT**



## PENANG SECOND BRIDGE INTERCHANGE



Client  
**JKSB**

Our Scopes  
**Civil & Structural Engineering**

Year Completion  
**2012**

Value  
**RM 400Million**

Our firm provided comprehensive Civil & Structural Engineering services for Package 1 of the Penang Second Bridge Crossing project, focusing on the Batu Kawan Expressway.

- Design and engineering of the main expressway
- Access roads to the toll plaza
- Rest and Service Area facilities

Our team's expertise ensured the successful integration of these elements, creating a seamless traffic flow and enhancing connectivity for this vital link between Penang Island and the mainland.







## RESURFACING SEPANG CIRCUIT



**After 10 years of rigorous use by racing cars, the Sepang F1 Circuit needed a complete overhaul of the pavement.** We were commissioned together with the original pavement contractor to resurface the entire circuit. The demanding work were completes in tight windows of racing programmes and provided a fresh surface for the world class facility.



Sepang Circuit underwent several pavement maintenance works after its completion in 1997.

The works covered selected widening of some curves, regrading and improvement of drainage, track enhancements to conform to latest racing requirements and repair of selected sections.





## LPT 2 DUNGUN INTERCHANGE



Client  
**JKR MALAYSIA**

Location  
**Terengganu**

Our Scopes  
**Civil & Structural  
Engineering**

Our firm played a key role in the design and supervision of Package 9A2 of the East Coast Expressway Phase 2 project, a significant infrastructure development extending the expressway from Kuantan to Kuala Terengganu.

- Appointed by PWD Malaysia following a rigorous Technical capability review
- Part of a select team of consultants for the 165km expressway extension
- Focused on Package 9A2, featuring a Trumpet Interchange
- Designed and supervised the construction of an 800m elevated structure spanning a wide flood basin





## DASH HIGHWAY



Client

**ZAUDUN-LEENG  
SDN BHD**

Value

**RM789 Million**

Our Scope

**Civil and Structural Engineering**

The Damansara-Shah Alam Elevated Expressway (DASH) is a major infrastructure project in Selangor, Malaysia. As detailed design consultants, our civil and structural engineering services include:

1. Designing a section of the elevated expressway structure
2. Conducting soil investigations and foundation design
3. Planning interchanges and connections to existing road networks



## BONDED ROAD PADANG BESAR



Client  
**NCIA**

Value  
**RM95Million**

Iktisas ingenieurs design and supervise the first bonded road in Malaysia allowing container lorries from Thailand along the international border going into the Perlis Inland Port in Chuping Valley, Padang Besar, Perlis.

Date of appointment  
**MAR 2020**

Status  
**Under  
Construction**





## PLAIN CONCRETE PAVEMENT (PCP)



Client  
**MUTIARA  
PERLIS**

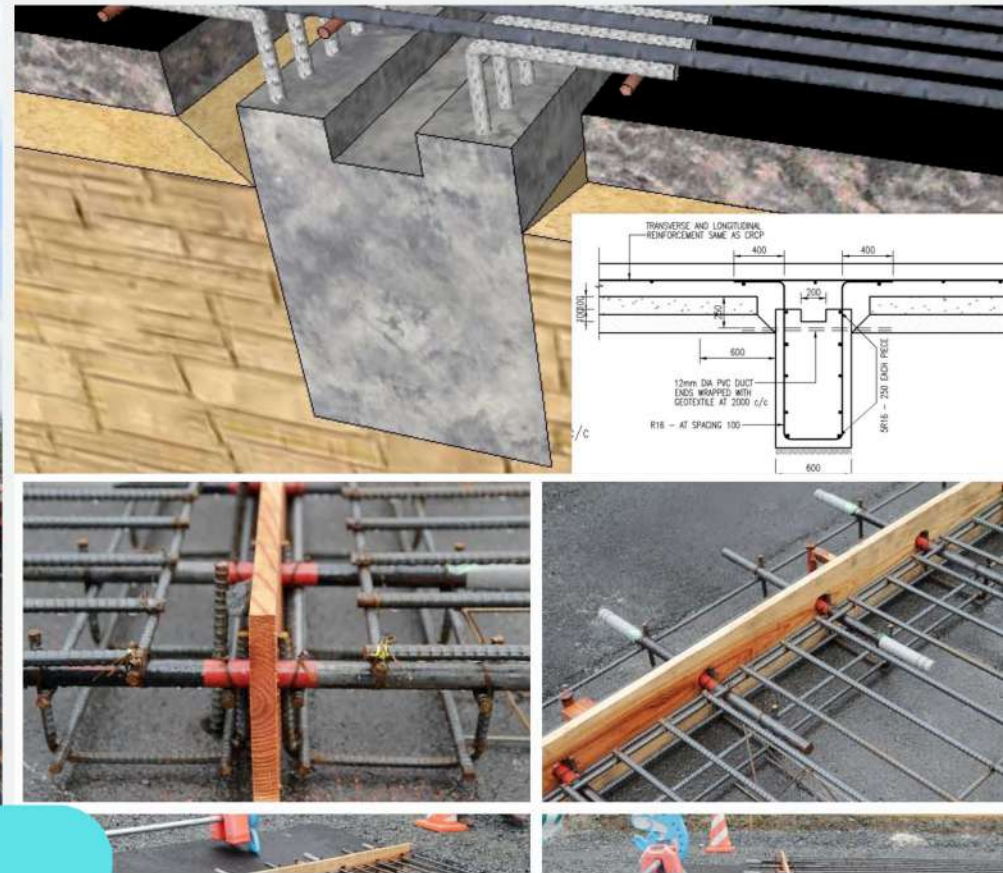
Date of appointment  
**MAR 2020**

Value  
**RM300Million**

Status  
**Under  
Construction**

Construction of concrete pavement to store containers before loading onto railwagon to ship Penang port.





## CONTINUOUSLY REINFORCED CONCRETE PAVEMENT (CRCP)



Client  
**JKR MALAYSIA**

Year Completion  
**2015**

Location  
**Central Spine Road Pkg 3H  
along the Felda Telang to Cegar  
Perah**

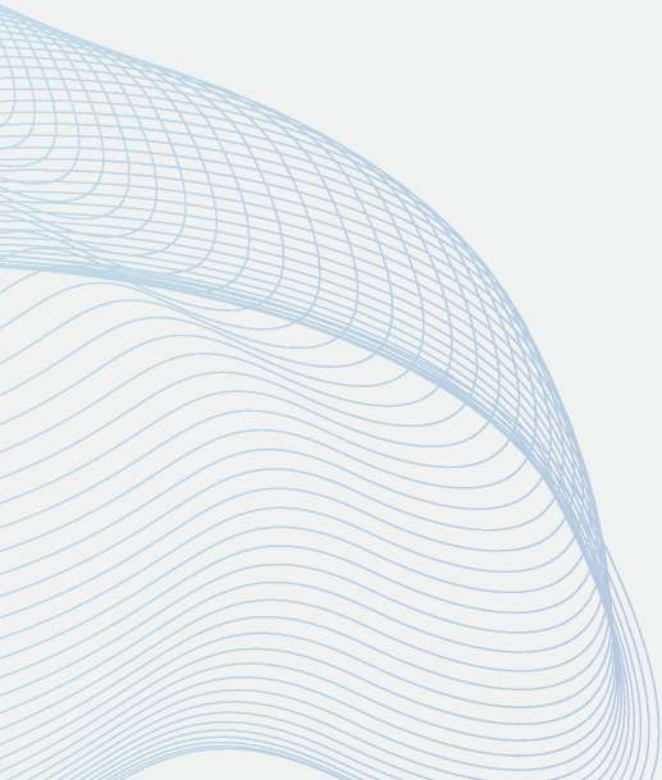
Our firm provided specialized engineering services for a key section of the Central Spine Road Package 3H, focusing on the stretch from Felda Telang to Cegar Perah.

- Implementation of continuous reinforced concrete pavement in selected sections
- Utilization of cutting-edge technology adopted from Japan
- Enhanced durability and reduced maintenance requirements compared to traditional road surfaces

Our team's expertise in adapting and implementing this advanced Japanese technology demonstrates our commitment to innovative solutions in road construction.

Selected Projects

# STRUCTURAL DESIGN





## MASJID AS-SYAKIRIN



Client

**AQIDEA  
ARCHITECT**

Project Value

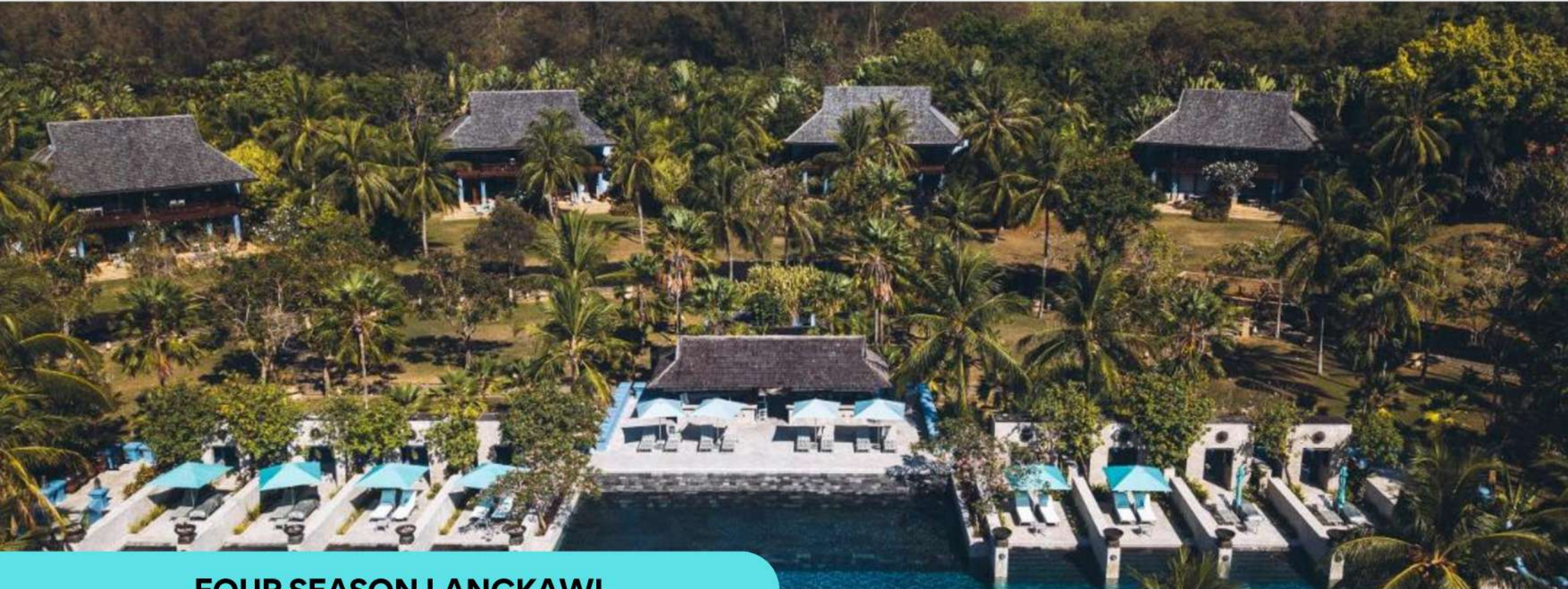
**RM22 Million**

Our Scopes

- **Civil & Structural Engineering**
- **Mechanical & Electrical Engineering**

As principal consultants for the Masjid As-Syakirin extension at KLCC Park, Kuala Lumpur, we provide comprehensive Civil & Structural and Mechanical & Electrical engineering services. Our work includes:

1. Structural design for seamless integration with the existing mosque
2. Foundation and drainage system planning
3. HVAC, lighting, and power distribution design
4. Audio, plumbing, and fire safety system implementation



## FOUR SEASON LANGKAWI



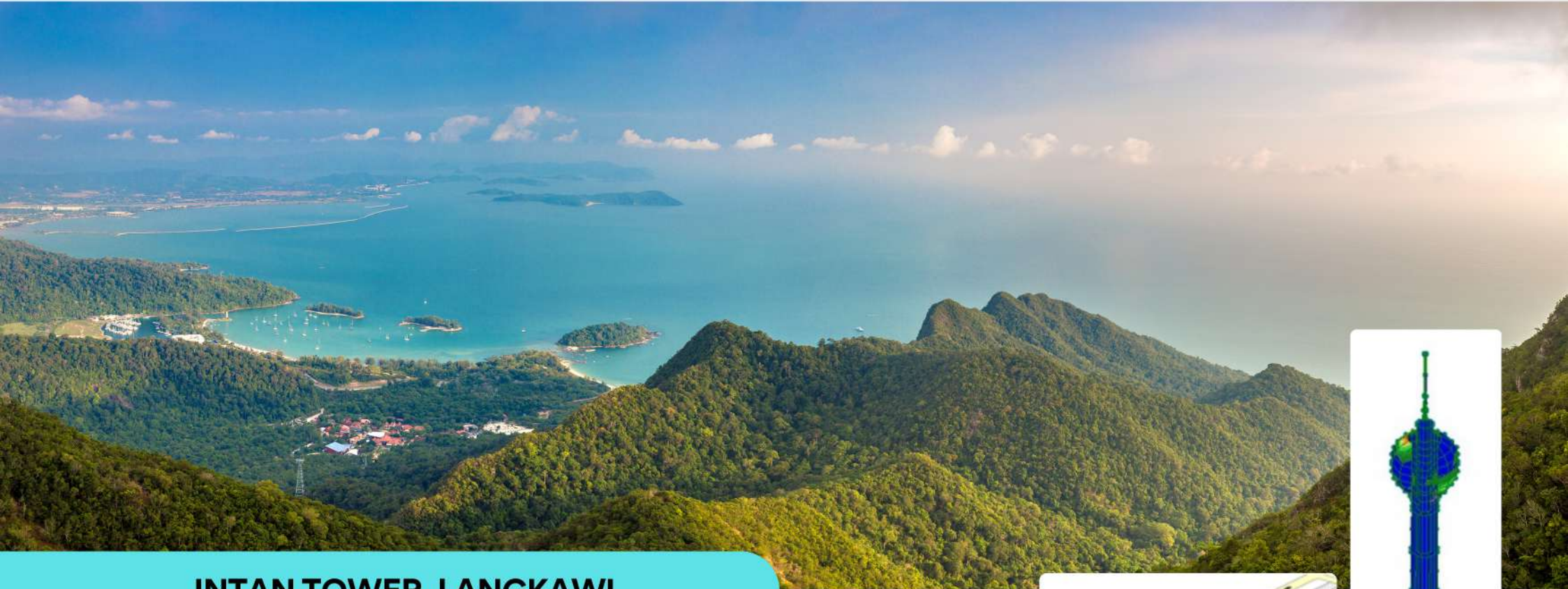
Client  
**MAS PROPERTY  
DEVELOPMENT**

Project Value  
**RM200 Million**

Our Scopes  
**Mechanical & Electrical Engineering**

Our scope for this luxury beachfront property includes:

1. Designing and implementing advanced HVAC systems for optimal comfort in tropical climate
2. Planning and installing energy-efficient lighting solutions throughout the resort
3. Developing sustainable power distribution networks
4. Implementing smart building management systems for enhanced guest experience
5. Designing water heating and distribution systems



## INTAN TOWER, LANGKAWI



Client

**TELECOM  
MALAYSIA  
BERHAD**

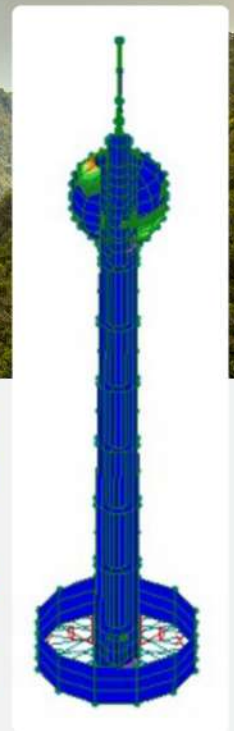
Our Scopes

- **Civil & Structural Engineering**
- **Mechanical & Electrical Engineering**

Value

**RM200 Million**

Our firm provided comprehensive Civil and Structural Engineering services for the design of INTAN Tower in Langkawi, Malaysia. This iconic structure aims to enhance Langkawi's skyline and serve as a landmark attraction.





## EPSOM COLLEGE



Client  
**EPSOM COLLEGE  
 MALAYSIA SDN BHD**

Date of appointment  
**Civil and Structural  
 Engineering**

Value  
**RM100 million**

Status  
**Completed 2015**

Our company is providing consultancy engineering services for the development of Epsom College in Bandar Enstek, Negeri Sembilan. This extensive project is being executed in seven distinct phases, encompassing:

1. Junior & Senior Boarding Houses
2. Senior School
3. Communal Areas
4. Prep School
5. External Works and Landscape



## TERMINAL ONE SEREMBAN



Client **PANJI TIMUR SDN BHD** Value **RM250 Million**

Our Scopes  
**Civil & Structural Engineering and  
 Mechanical & Electrical Engineering**

We provides comprehensive civil, structural, and electrical engineering services for the Terminal One Seremban development. This multi-faceted project encompasses:

- A 22-storey office tower
- An integrated bus terminal
- A modern shopping mall
- A budget hotel



## SEPANG INTERNATIONAL CIRCUIT



Client  
**MALAYSIA AIRPORT BHD**

Our Scopes

- **Project Management & Lead Consultant**
- **Civil & Structural Engineering**
- **Mechanical & Electrical Engineering**
- **Project Management**

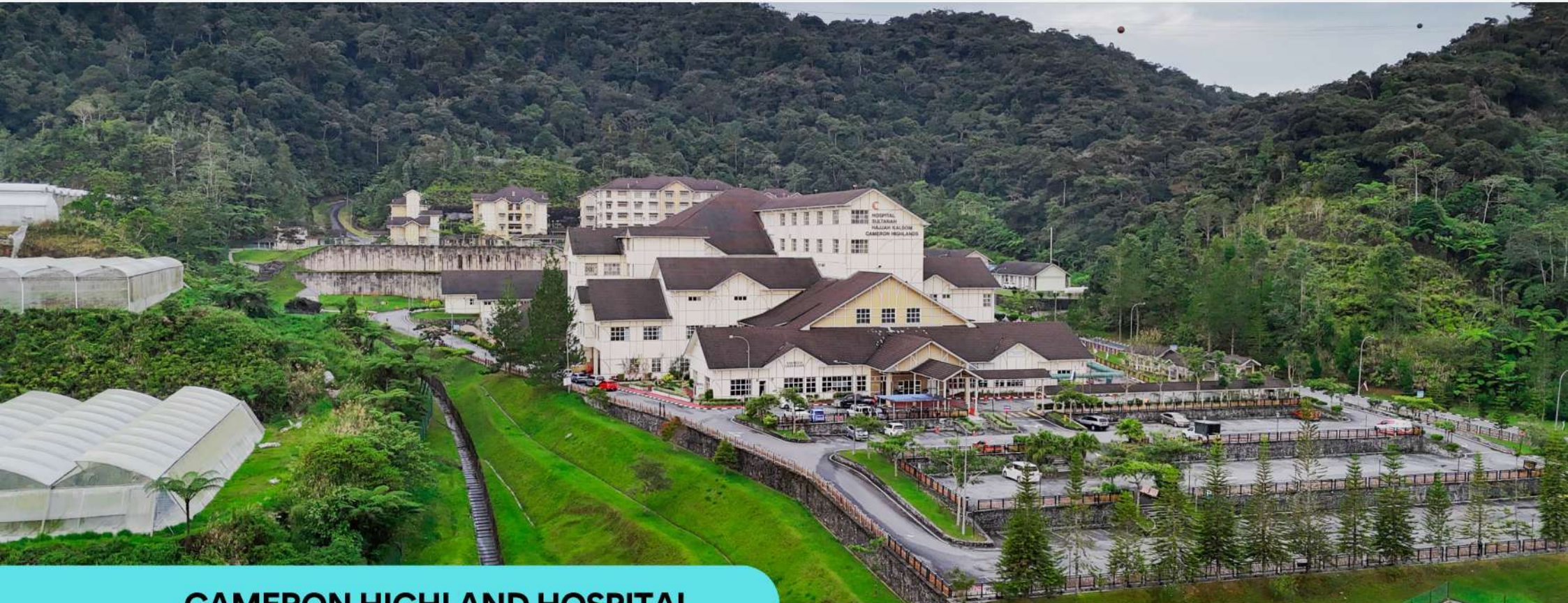
Value  
**RM300 Million**

Year Completion  
**1998**

As Project Management Consultant and Lead Consultant for the Sepang Circuit, our company oversees crucial aspects of this world-renowned motorsport facility in Malaysia.

We ensure the circuit meets FIA standards while optimizing for safety, performance, and spectator experience. Our expertise contributes to Sepang's status as a premier motorsport venue, capable of hosting international events like Formula 1 and MotoGP.





## CAMERON HIGHLAND HOSPITAL



Client

**PUBLIC WORKS DEPARTMENT**

Our Scopes

**Civil & Structural Engineering**

Value

**RM100 Million**

Status

**Completed 2009**

We provide expert solutions tailored to the unique challenges of healthcare infrastructure in this mountainous region. Our scope encompasses:

- Structural design optimized for the hospital's specific requirements and local topography
- Foundation engineering adapted to Cameron Highlands' soil conditions
- Seismic risk assessment and mitigation strategies
- Civil works including site grading, drainage systems, and utilities infrastructure
- Design of supporting structures such as retaining walls and slope stabilization
- Integration of sustainable and eco-friendly engineering practices



## SULTAN ABDUL HALIM HOSPITAL



Client

**PUBLIC WORKS  
DEPARTMENT**

Our Scopes

**Civil & Structural  
Engineering**

Value

**RM480 Million**

We provide comprehensive solutions tailored to the specific needs of this healthcare facility. Our scope of work includes:

- Structural design and analysis of the hospital buildings, ensuring safety and functionality
- Foundation engineering optimized for local soil conditions
- Seismic design considerations and implementation
- Civil works including site development, grading, and drainage systems
- Design of essential infrastructure such as access roads, parking facilities, and utilities networks
- Integration of sustainable engineering practices to enhance energy efficiency and reduce environmental impact



## SLIM RIVER HOSPITAL



Client  
**PUBLIC WORKS DEPARTMENT**

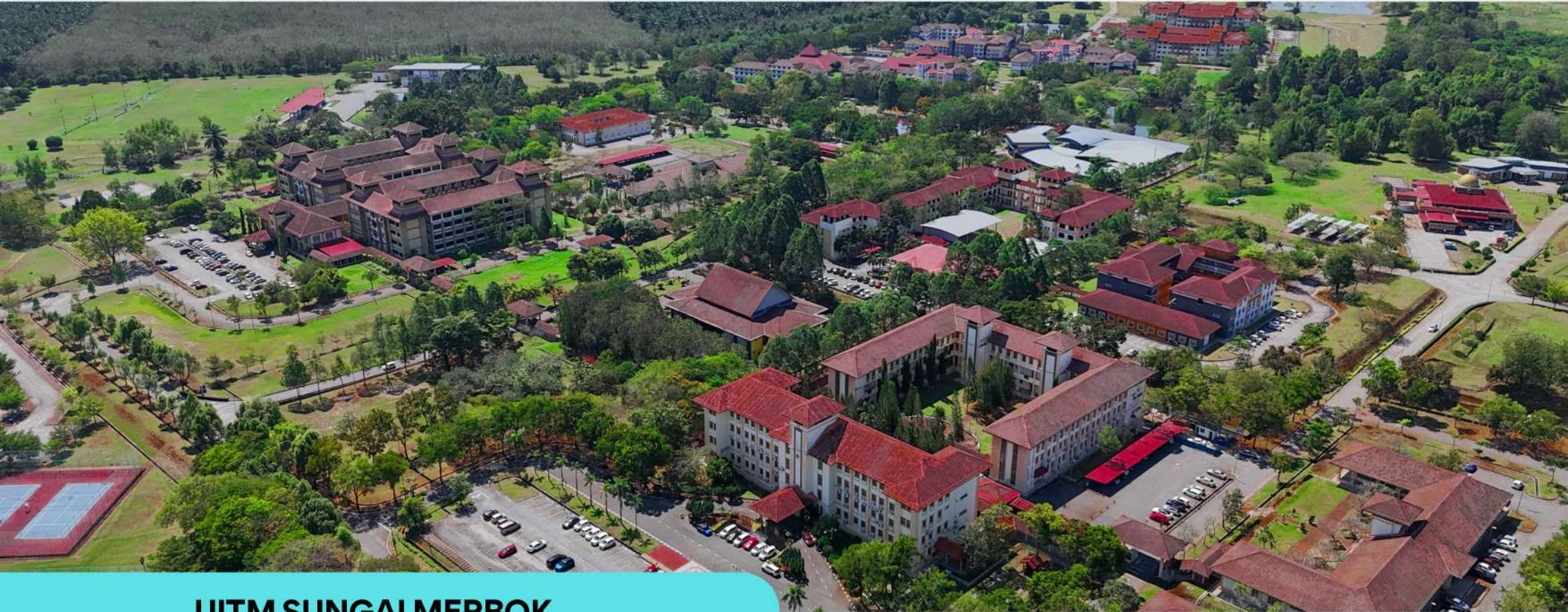
Our Scopes  
**Civil & Structural Engineering**

Value  
**RM156 Million**

Status  
**Completed 2001**

We provide expert solutions tailored to the specific needs of this healthcare facility, considering its local context and community requirements. Our scope of work encompasses:

- Comprehensive structural design and analysis of hospital buildings
- Foundation engineering optimized for Slim River's soil conditions
- Civil works including site preparation, grading, and efficient drainage systems
- Design of supporting infrastructure such as access roads and parking facilities
- Integration of utilities networks and emergency power systems
- Implementation of flood mitigation measures, given the area's susceptibility to flooding
- Incorporation of sustainable design principles to enhance energy efficiency and reduce environmental impact



## UITM SUNGAI MERBOK



Client  
**MINISTRY OF  
HIGHER LEARNING**

Our Scopes  
**Civil & Structural  
Engineering**

Value  
**RM32 Million**

Status  
**Completed 1998**

- Structural design and analysis of campus buildings, including lecture halls, laboratories, and administrative facilities
- Civil works encompassing site development, grading, and efficient drainage systems
- Design of campus infrastructure including access roads, pedestrian walkways, and parking facilities
- Integration of sustainable engineering practices to enhance energy efficiency and reduce environmental impact
- Structural considerations for potential future expansion of the campus



## PRECINT 12 PUTRAJAYA

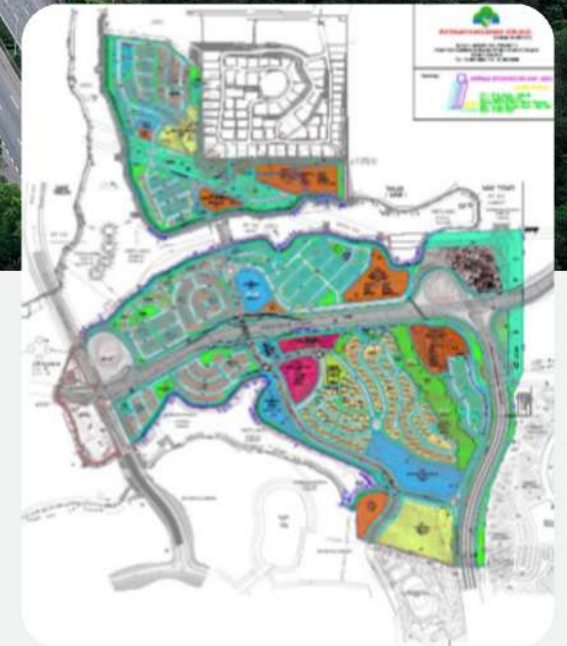


Client  
**PUTRAJAYA HOLDINGS**  
Our Scopes  
**Civil Infrastructure Design**

Area  
**485 acres**

Our expertise encompasses a diverse range of projects that are transforming the urban landscape:

- Residential (high rise apartments, bungalow and terrace houses)
- Commercial centre
- Public amenities & facilities
- Green areas





**PGA POLICE CAMP SEMENYIH**



Client

**HOME AFFAIRS  
MINISTRY**

Value

**RM265 Million**

Our Scopes

**Civil & Structural Engineering and  
Construction Supervision**

This large-scale project encompasses:

- Design and engineering of 650 medium-rise apartment units for police personnel and their families
- Civil works across 200 acres of land, including site preparation, grading, and infrastructure development
- Structural design of residential buildings, ensuring safety, durability, and comfort
- Implementation of efficient drainage and stormwater management systems
- Design of access roads, parking facilities, and pedestrian pathways
- Integration of utilities networks and community amenities



## SEREMBAN CITY CENTRE



Client  
**LANGTIMOR  
SDN BHD**

Value  
**RM25 Million**

Our Scope  
**Civil and Structure Engineering**

Our firm provided Civil & Structural Engineering consultancy for the development of a new business and office complex in Seremban City Centre. This project aims to enhance the city's commercial infrastructure and create a modern business hub.



## BOMBA PRESINT 14



Client

**KEMENTERIAN KESEJAHTERAAN  
BANDAR, PERUMAHAN DAN  
KERAJAAN TEMPATAN**

Our Scope

**Civil and Structure Engineering**

Value

**RM7 Million**

BOMBA Presint 14 refers to a fire station development in Precinct 14 of Putrajaya, Malaysia. As civil and structural engineers, our role involves:

1. Designing the main station building and auxiliary structures
2. Ensuring structural integrity to withstand heavy equipment loads
3. Planning efficient vehicle access and maneuvering areas
4. Implementing proper drainage and water supply systems
5. Designing foundations suitable for the local soil conditions



## MELAWATI TRAFFIC FLOW

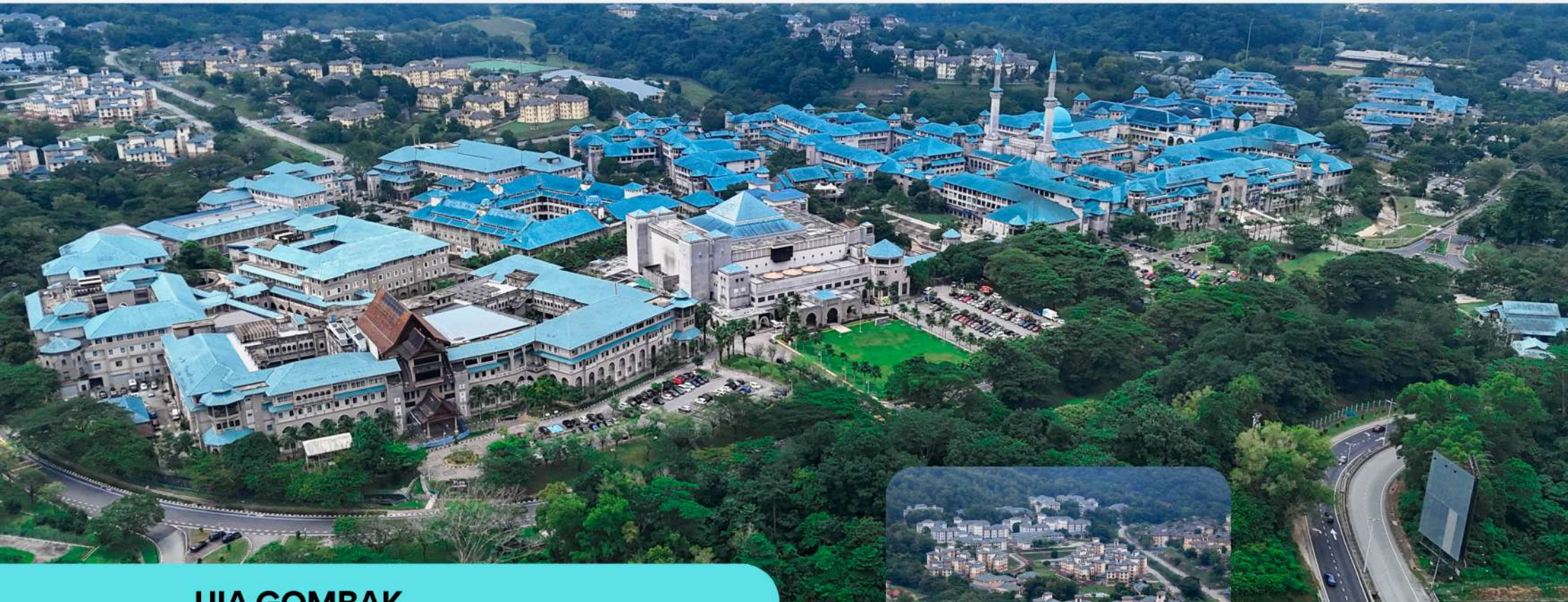


Client  
**NEGARA  
PROPERTIES**

Status  
**Completed**

Scope  
**Civil & Structural Engineering**

Our firm provided traffic and road design services for the Melawati Urban Renewal project, a collaborative effort between NPMB (Negara Properties), MPAJ (Majlis Perbandaran Ampang Jaya), and the Selangor State Government. This urban regeneration initiative aimed to revitalize the Melawati area.



## UIA GOMBAK



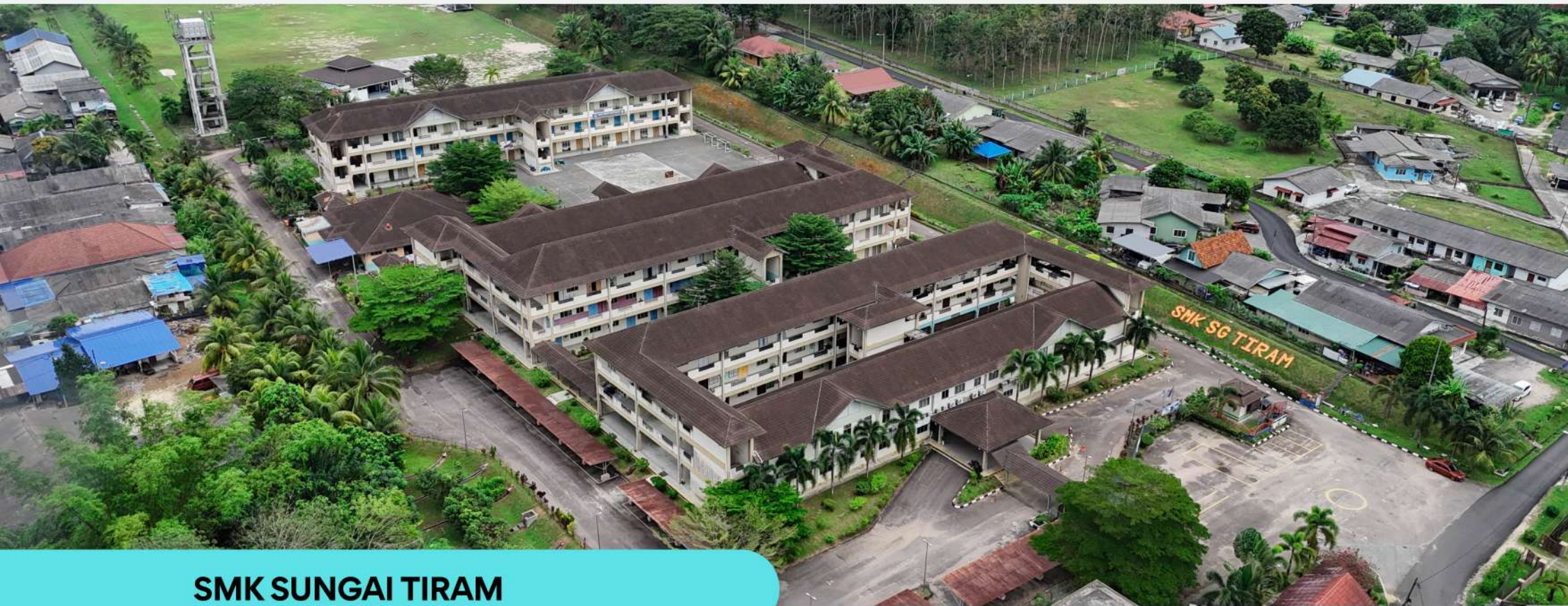
Client  
**UNIVERSITI ISLAM  
ANTARABANGSA**

Date of appointment  
**Civil and  
Structural  
Engineering**

Value  
**RM165 million**

Status  
**Completed 2001**

Our firm provided comprehensive Civil and Structural Engineering consultancy services for the development of the 8th Female Student Residence Hall at the International Islamic University Malaysia's Gombak Campus. This project aimed to expand the university's student housing capacity, specifically catering to the growing needs of female students.



## SMK SUNGAI TIRAM



Client

**KEMENTERIAN  
PELAJARAN MALAYSIA**

Our Scopes

**Civil & Structural  
Engineering**

As consultant engineers for SMK Sungai Tiram, our focus is on Civil & Structural engineering using Industrialized Building System (IBS) for this school project in Sungai Tiram, Johor. Our scope includes:

1. Designing the school's structural framework using IBS components
2. Optimizing prefabricated elements for efficient on-site assembly
3. Ensuring structural integrity and safety of all buildings
4. Planning the layout for classrooms, laboratories, and common areas
5. Designing foundations suitable for local soil conditions



## SMK TANJONG CHAT



Client  
**KEMENTERIAN  
PELAJARAN MALAYSIA**

Our Scopes  
**Civil & Structural  
Engineering**

Year Completion  
**2007**

Value  
**RM15 Million**

As consultant engineers for SMK Tanjung Chat in Kota Bharu, Kelantan, we specialize in Civil & Structural engineering. Our scope includes:

1. Implementing efficient structural solutions for related facilities
2. Ensuring structural integrity and safety of all buildings
3. Designing foundations suitable for local soil conditions



## KOMPLEKS BALAI POLIS SRI HARTAMAS



Client  
**JKR MALAYSIA**

Scope  
**Civil and Structural Engineering**

- Structural design of the main police station building and auxiliary structures
- Foundation engineering suited to urban soil conditions
- Civil works including site development, drainage systems, and utilities planning
- Design of secure areas and specialized law enforcement facilities
- Integration of modern security features with functional design



## BUKIT JALIL PARK



Client

**KEMENTERIAN BELIA DAN SUKAN**

Our Scopes

**Civil & Structural Engineering and  
Mechanical & Electrical Engineering**

As consultant engineers for Bukit Jalil Park in Kuala Lumpur, our company provides comprehensive engineering services covering both Civil & Structural and Mechanical & Electrical aspects. Our scope includes:

Civil & Structural Engineering:

1. Designing walkways, bridges, and viewing platforms
2. Developing drainage systems and water features
3. Planning and constructing recreational facilities
4. Ensuring soil stabilization and erosion control
5. Designing foundations for park structures



## SMK DATO IBRAHIM MAJID



Client

**KEMENTERIAN  
PELAJARAN MALAYSIA**

Our Scopes

**Civil & Structural  
Engineering**

Year Completion

**2008**

As consultant engineers for SMK Dato Ibrahim Majid, our focus is on Civil & Structural engineering using Industrialized Building System (IBS) for this school project in Kluang, Johor. Our scope includes:

1. Designing the school's structural framework using IBS components
2. Optimizing prefabricated elements for efficient on-site assembly
3. Ensuring structural integrity and safety of all buildings
4. Planning the layout for classrooms, laboratories, and common areas
5. Designing foundations suitable for local soil conditions



## MSN BUKIT JALIL



Client  
**KEMENTERIAN BELIA DAN SUKAN**

Value  
**RM60 Milion**

Our Scopes  
**Civil & Structural Engineering and  
Mechanical & Electrical Engineering**

As consultant engineers for Padang MSN Bukit Jalil, part of the National Sports Complex in Kuala Lumpur, our company provides comprehensive engineering services covering both Civil & Structural and Mechanical & Electrical aspects.



## MASJID BANDAR SERI PUTRA BANGI



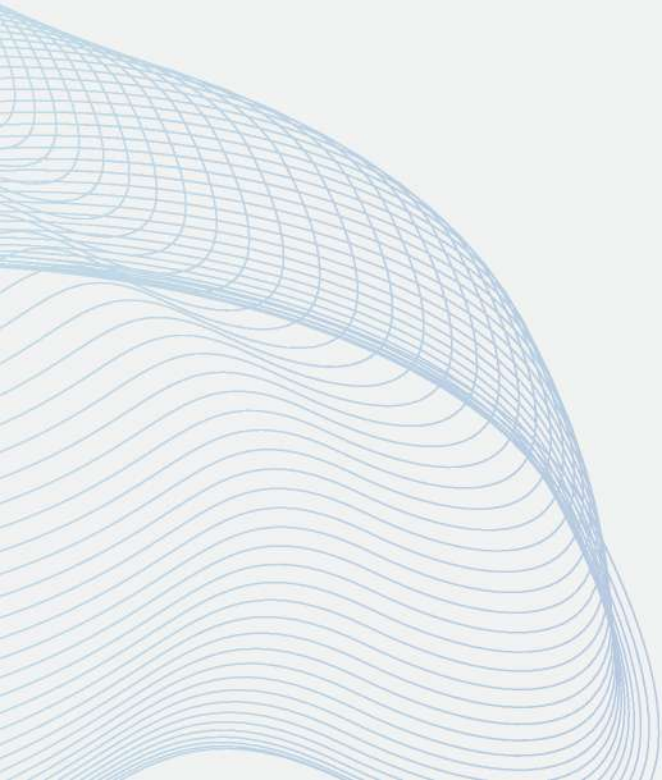
Client  
**JABATAN AGAMA ISLAM SELANGOR**

Scope  
**Civil and Structure Engineering**

Our firm provided comprehensive Civil and Structural Engineering services for the construction of a new mosque and associated facilities in Bandar Seri Putra, Bangi. This project aimed to create a spiritual and community center for the growing population in the area.

Selected Projects

# **BUILDING SERVICES**





## UNIVERSITI TEKNOLOGI PETRONAS



Client

**UNIVERSITI TEKNOLOGI PETRONAS**

Our Scopes

**Mechanical & Electrical Engineering**

As consultant engineers for UTP in Bandar Sri Iskandar, Perak, our company provides specialized Mechanical & Electrical Engineering services for Package 4 and 5. This comprehensive project encompasses:

1. Housing facilities
2. Cultural Centre
3. Conference Centre
4. Mosque
5. Sports Complex



## USIM NILAI



Client

**KOLEJ UNIVERSITI  
ISLAM MALAYSIA**

Scope

**Mechanical & Electrical  
Engineering**

We provided Civil and Structural Engineering services for USIM's Essential Staff Housing Complex. Our work included structural design, foundation engineering, site development, and infrastructure planning. The project aimed to create high-quality residential facilities for key university personnel.



## WISMA PERKESO



Client  
**PERKESO**

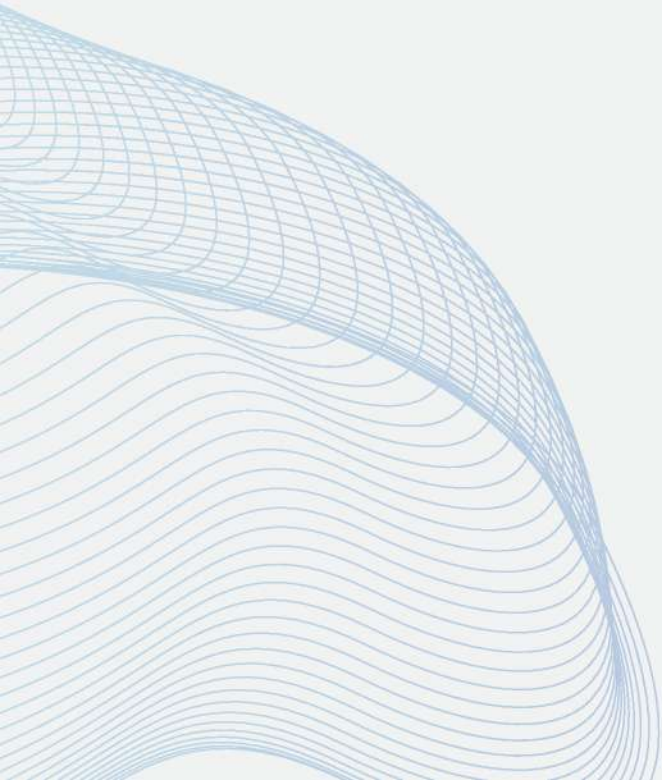
Our Scope  
**Mechanical & Electrical Engineering**

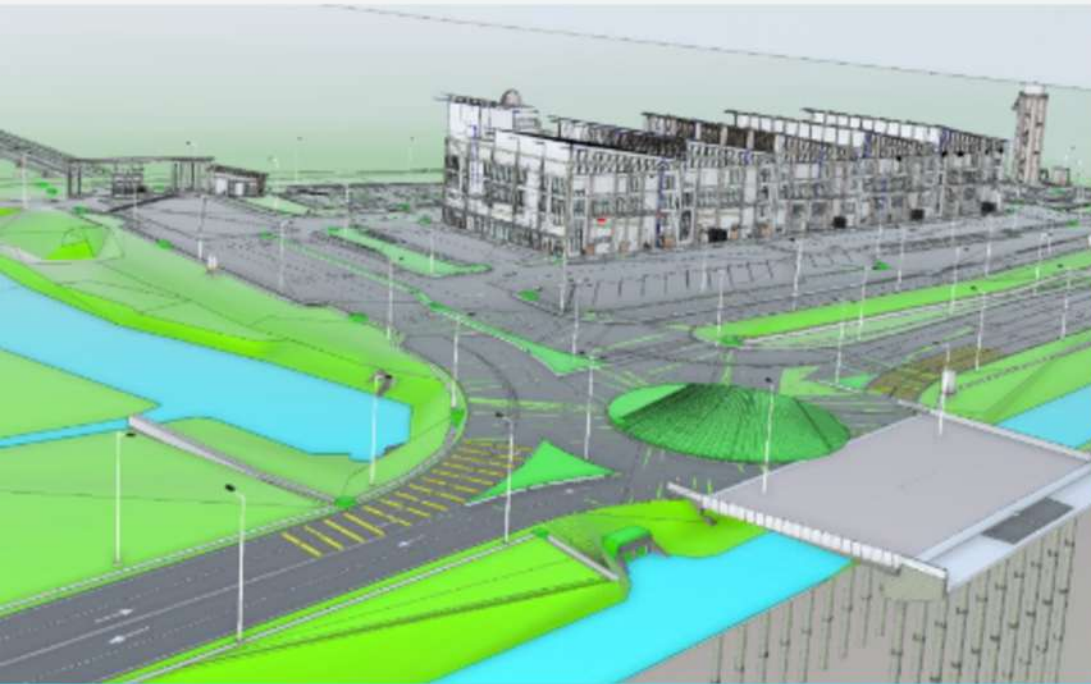
Our consultant engineering firm specializes in mechanical and electrical engineering services for the Wisma PERKESO development. This project features:

- A 12-storey office building
- 6-storey elevated parking structure

Selected Projects

# **BUILDING INFORMATION MODELING (BIM)**





## JETTY MUKIM SANGLANG, PERLIS



Client  
**Mutiara Perlis  
Sdn Bhd**

Date of appointment  
**APRIL 2025**

Job Scope  
**BIM Consultant**

Status  
**Under  
Construction**

Modelling LOD300 that cover all of Consultant Drawings including Architect, C&S and M&E.



## NEW ROAD FOR KG. BERDANG, JELI, KELANTAN.



Client  
**JKR Malaysia**

Job Scope  
**BIM Consultant**

Modelling LOD100 to LOD500 that includes road construction, upgrading the FT001/562/00 bridge from R3 to a four-lane, two-way R5 standard (35 m length, 23 m width), installing a street lighting system, and relocating utilities such as TNB, Lembaga Air Perak, and Telekom.

Date of appointment  
**October 2024**

Status  
**Under Construction**



## ICQS BUKIT KAYU HITAM, KEDAH



Client

**Kementerian  
Dalam Negeri  
(KDN)**

Date of appointment

**August 2024**

Job Scope

**BIM Consultant**

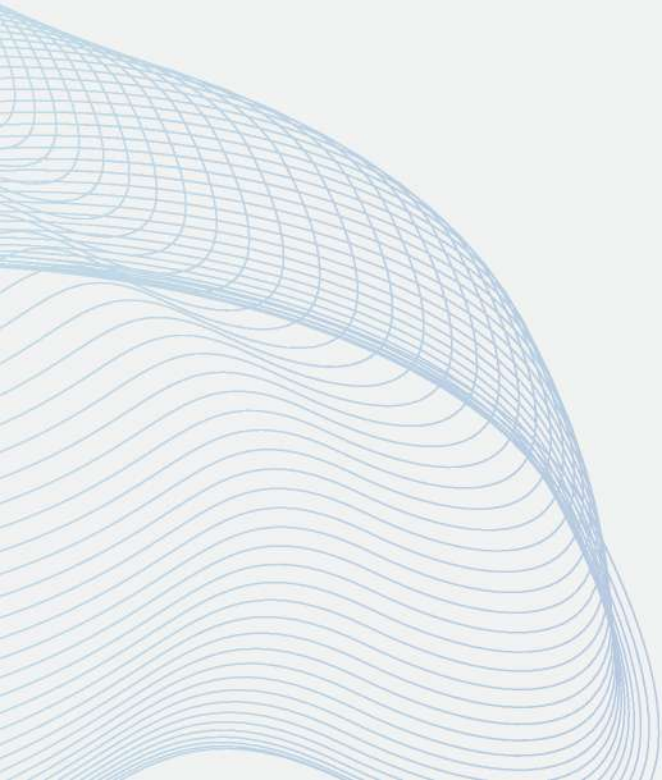
Status

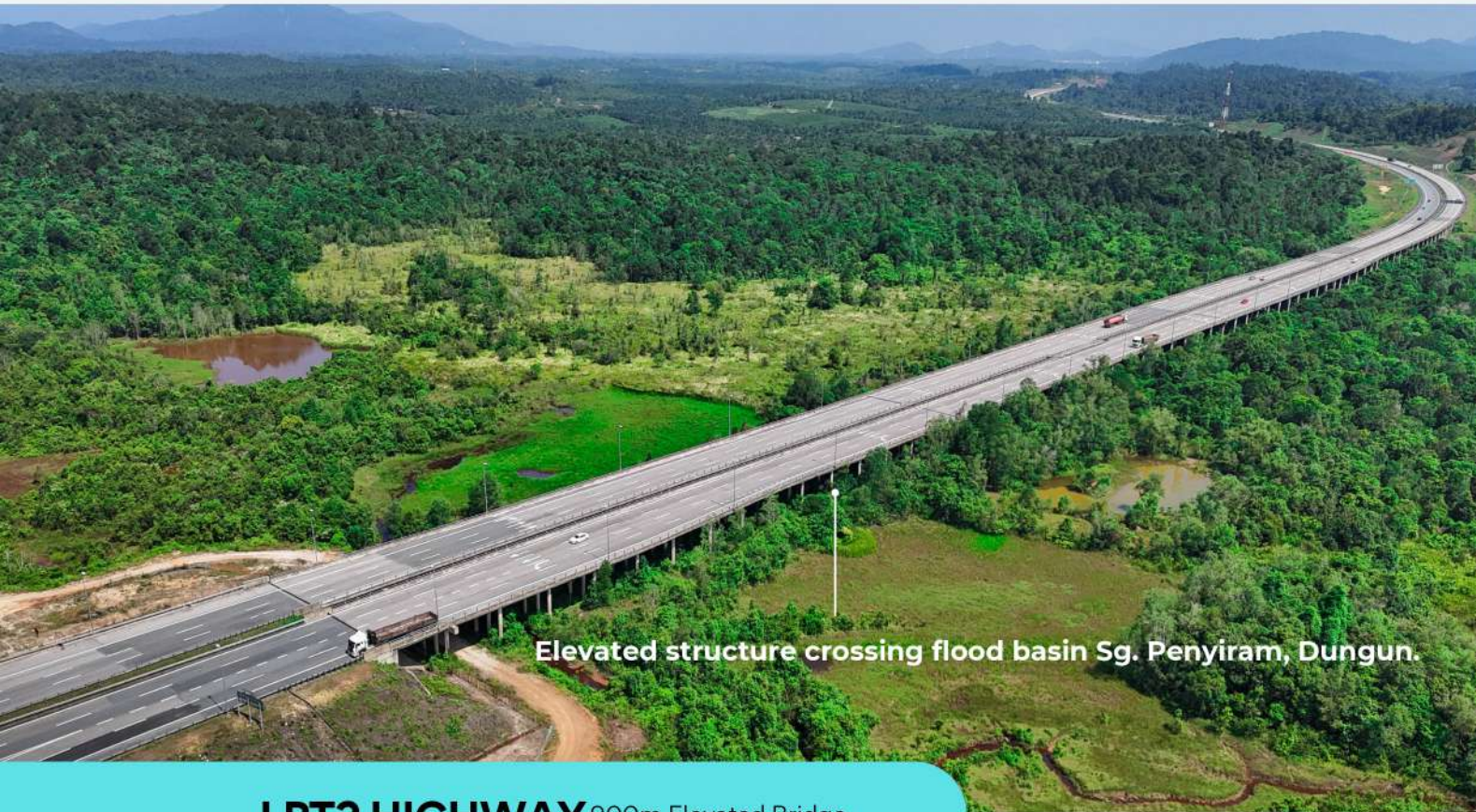
**Under  
Construction**

Modelling LOD100 to LOD500 that cover all of Consultant Drawings including Architect, C&S and M&E.

Selected Projects

# BRIDGES





Elevated structure crossing flood basin Sg. Penyiram, Dungun.



**LPT2 HIGHWAY** 900m Elevated Bridge



Client **JKR MALAYSIA** Value **RM100Million**

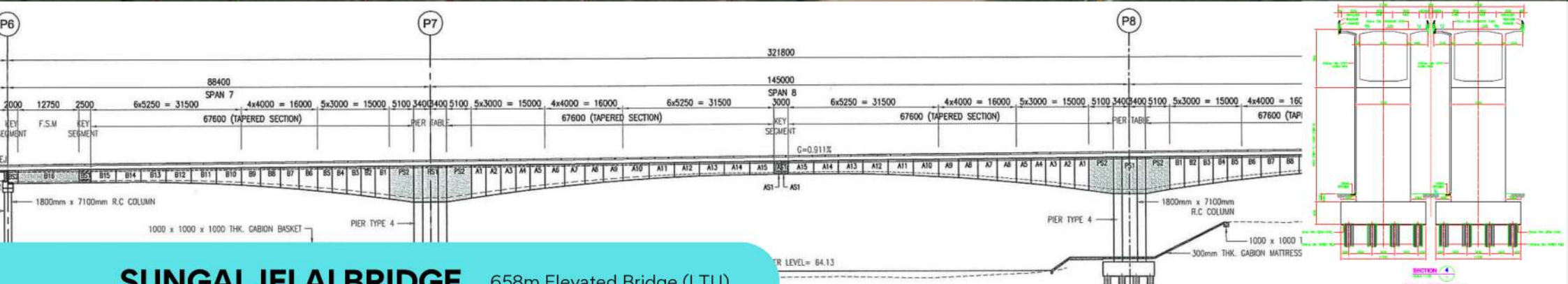
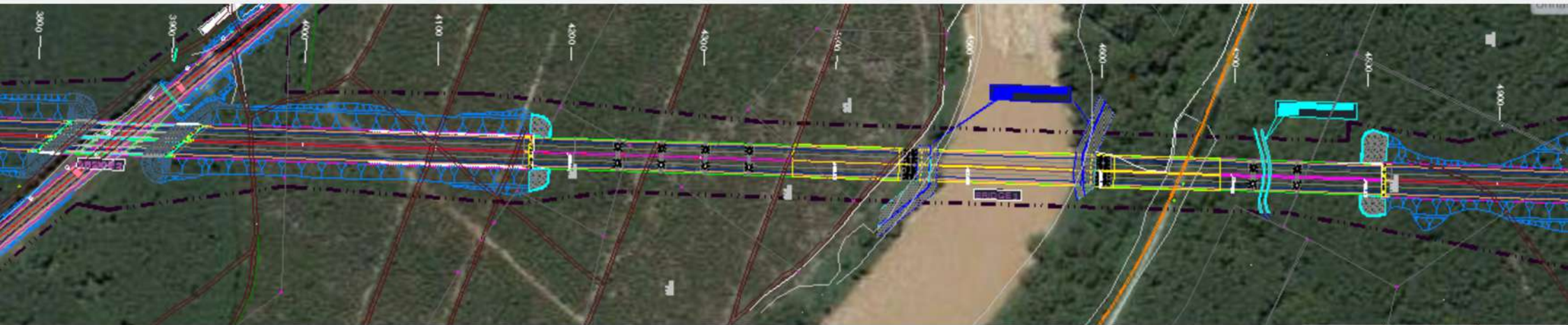
Our Scopes **Civil & Structural Engineering**

Status **Completed 2012**

The East Coast Expressway (ECE Phase 2) Package 9 is part of a major highway network in Peninsular Malaysia. Our civil and structural engineering work includes:

1. Designing climate-resistant highway structures
2. Implementing advanced drainage systems
3. Engineering bridges and viaducts
4. Developing slope stabilisation techniques
5. Designing interchanges and rest areas





## SUNGAI JELAI BRIDGE 658m Elevated Bridge (LTU)

Client

**JKR MALAYSIA**

Location

**Pahang**

Our Scopes

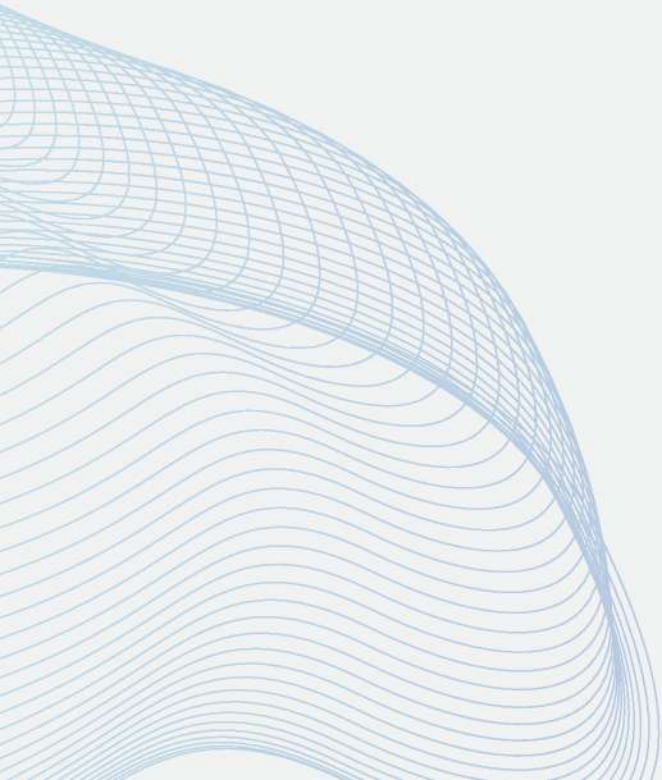
**Civil & Structural Engineering**

As Civil & Structural Engineering consultants for the Sungai Jelai Bridge in Kuala Lipis, we're designing a 658m long structure crossing both the river and a railway line. Key features include:

1. Balanced cantilever concrete box girder design
2. 145m maximum central span
3. 13 spans of 33m precast T-beams for the approach
4. Focus on structural integrity, flood mitigation, and railway safety
5. Compliance with Malaysian standards and environmental considerations

Selected Projects

# COASTAL PROTECTION, PORTS AND JETTIES





## KUALA TERENGGANU CITY CENTRE



Client  
**EAST COAST ECONOMIC  
 REGION DEVELOPMENT  
 COUNCIL**

Our Scopes  
**Principal Consultant**  
 (Detailed Design & Supervision)

Value  
**RM155 Million**

Status  
**Completed**

Our expertise encompasses a diverse range of projects that are transforming the urban landscape:

- Residential and waterfront residential complexes
- Signature office buildings
- Civic centre development
- Theme resort construction
- Marina and taxi hub integration
- Cruise berth and bazaar establishment
- Maritime Museum design and implementation
- Souq (traditional marketplace) development
- Masjid Muara construction
- Sculpture gardens creation



Breakwater

Wharf

## TOK BALI JETTY



Client  
**EAST COAST  
TERMINAL SDN BHD**

Year Completion  
**2010**

Our Scopes

- **Civil & Structural Engineering**
- **Mechanical & Electrical Engineering**

**First fully equip supply base in Kelantan.** At the heart of this project lies a meticulously designed breakwater system, skillfully crafted to withstand the relentless force of the ocean's currents and waves. Our team of engineers employed cutting-edge techniques and materials to create a robust barrier that safeguards the jetty from erosion and structural damage.



## KERPAN WATER INTAKE JETTY



Client  
**SAMAK AQUACULTURE SDN. BHD.**

Our Scopes  
**Design & Supervision**

Iktisas engineers through HYDEC is to design & supervise for the Integrated Shrimp Farm Project - Construction of Jetty and Flume Structure, Kerpan, Kedah, Malaysia



## SANGLANG JETTY



Client

**MUTIARA PERLIS**

Our Scopes

**Civil & Structural Engineering**

Iktisas Ingenieurs was appointed to design and supervise a 4km long concrete jetty in Kuala Perlis.



## LKIM JETTY PENANG



Our Scopes

**Civil & Structural Engineering**

Location

**Penang**

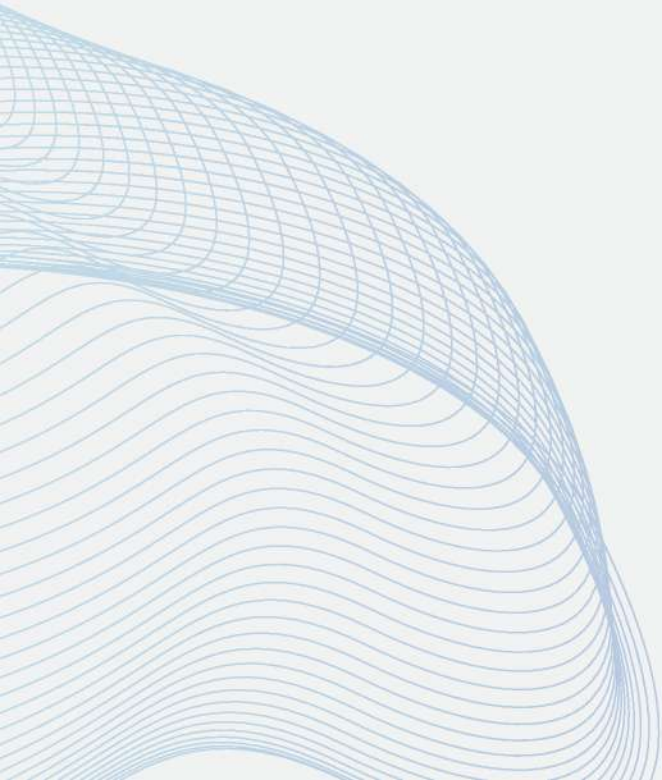
As Civil & Structural Engineering consultants for the LKIM Jetty in Penang, our key responsibilities include:

1. Marine-resistant jetty design
2. Berthing facilities for various fishing vessels
3. Breakwater and foundation design
4. Fish handling and storage area planning
5. Environmental and safety compliance

Our aim is to deliver a durable, efficient jetty that enhances Penang's fisheries infrastructure while meeting regulatory standards and supporting the local fishing industry.

Selected Projects

# PROJECT AND DEVELOPMENT MANAGEMENT





## UNIVERSITY MALAYSIA PERLIS (UNIMAP)



Client  
**MINISTRY OF  
HIGHER LEARNING**

Our Scopes  
**Project  
Management**

Value  
**RM808Million**

Status  
**Service until 2006**

We are a leading consultant engineering firm specializing in project management services for Universiti Malaysia Perlis (UNIMAP). Our expert team oversees the planning, execution, and successful completion of various infrastructure and development projects across UNIMAP's campuses. With a proven track record in educational facility management, we ensure efficient resource allocation, strict adherence to timelines, and high-quality deliverables. Our tailored approach aligns with UNIMAP's vision for growth and academic excellence, supporting the university's expansion and modernization efforts.



## MULTIMEDIA UNIVERSITY



Client  
**TELECOM  
MALAYSIA BERHAD**

Our Scopes  
**Project  
Management**

Value  
**RM350Million**

Project Status  
**Completed 2003**

As a leading consultant engineering firm, we specialize in project management services for Multimedia University (MMU) Cyberjaya. Our expert team oversees the planning, execution, and successful delivery of various infrastructure and development projects across MMU's innovative campus. With deep experience in managing educational and technological facilities, we ensure efficient resource allocation, strict adherence to timelines, and high-quality outcomes. Our approach aligns seamlessly with MMU's vision as a digital-era university, supporting its ongoing expansion and technological advancement initiatives in the heart of Malaysia's Multimedia Super Corridor.



## UITM SHAH ALAM



Client  
**MINISTRY OF  
HIGHER LEARNING**

Our Scopes  
**Project  
Management**

Value  
**RM106Million**

Project Status  
**Completed 2003**

We excel in overseeing the planning, execution, and delivery of diverse infrastructure and development projects across UiTM's expansive main campus. With extensive experience in managing large-scale educational facilities, we ensure optimal resource allocation, strict adherence to schedules, and superior quality outcomes. Our tailored approach aligns with UiTM's vision as Malaysia's premier comprehensive university, supporting its continuous growth and modernization efforts. We are committed to enhancing UiTM's built environment to facilitate academic excellence and innovation.



## NIZWA UNIVERSITY



Client

**HIGHER FOUNDATION  
COMMITTEE OF THE  
UNIVERSITY OF NIZWA  
INVESTMENT & DEVELOPMENT**

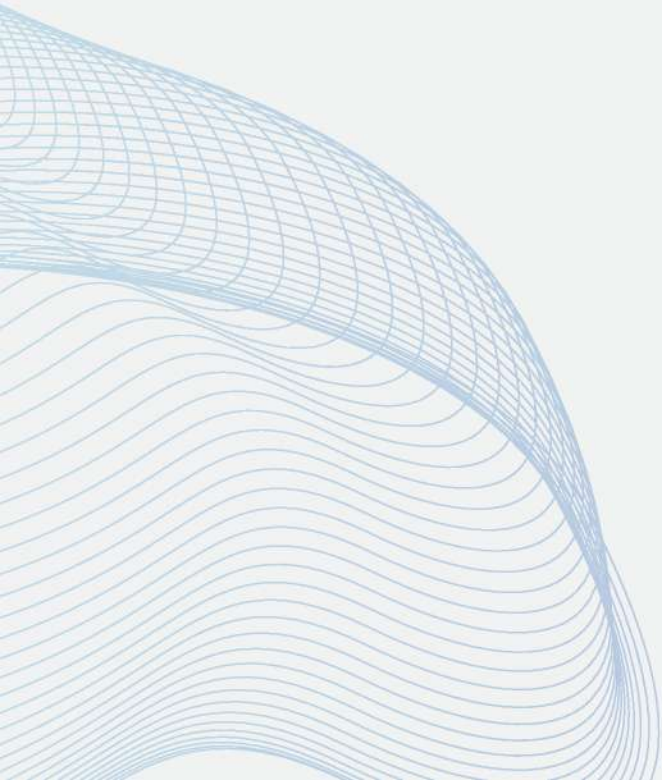
Our Scopes

**Owner's Engineer and  
Civil & Structural Engineering**

Our firm served as both Owner's Project Manager and Civil & Structural Engineering consultant for the development of Nizwa University, a large-scale educational facility designed to accommodate 20,000 students. This project demonstrates our capability to manage and engineer large-scale educational infrastructure. Our comprehensive approach ensured the creation of a modern, functional, and sustainable university campus that will serve as a cornerstone for higher education in the region.

Selected Projects

# DRAINAGE AND IRRIGATION





## SUNGAI MANIK DRAINAGE & IRRIGATION



Client

**KEMENTERIAN PERTANIAN  
DAN INDUSTRI ASAS TANI**

Our Scopes

**Civil & Structural Engineering**

Value

**RM18Million**

Our firm provided comprehensive Civil and Structural Engineering services for the detailed design of irrigation and drainage infrastructure improvements at Sg Manik. This project aimed to enhance water management and agricultural productivity in the area. This project showcases our expertise in agricultural infrastructure and water resources engineering. Our design solutions aim to improve water efficiency, reduce flood risks, and support sustainable agricultural practices in the Sg Manik area.



## TEBATAN BANJIR DI SUNGAI PARIT TAMPOI



Client

**JPS SELANGOR**

Location

**Dengkil**

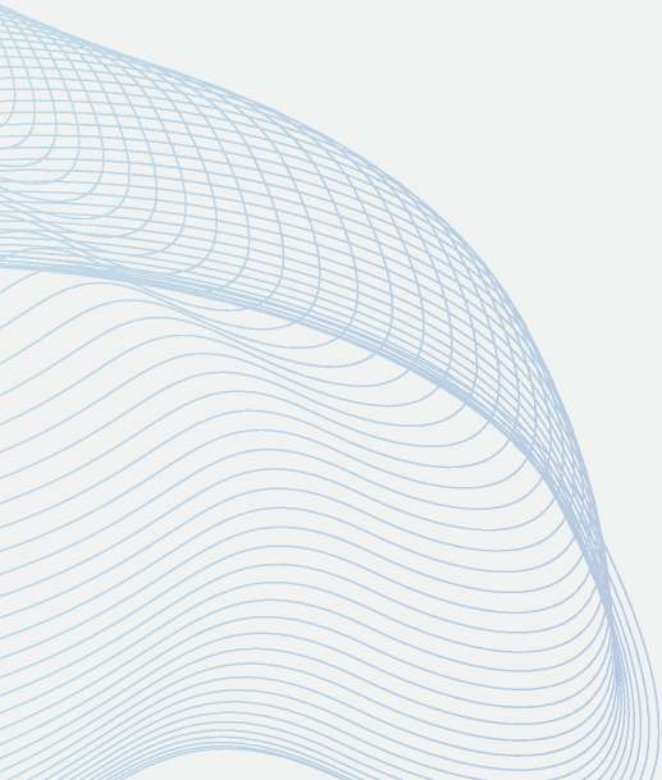
Our Scopes

- **Civil & Structural Engineering**
- **Mechanical & Electrical Engineering**

This project aimed to reduce flood risks and improve water management in the area. This project demonstrates our expertise in water resources engineering and flood mitigation. Our innovative design solutions aim to enhance the area's resilience to flooding while preserving the natural environment and supporting sustainable development in the region.

Selected Projects

# POWER GENERATION AND TRANSMISSION





## POWER PLANT EXPANSION PULAU KETAM



Client  
**TNB**

Status  
**Completed**

Our Scopes  
**Civil & Structural Engineering**

Value  
**RM530,000**

Our firm was appointed as the engineering consultant for civil works related to the expansion of power infrastructure on Pulau Ketam, Selangor. This project aimed to enhance the island's electricity supply and distribution capabilities.





## POWER PLANT EXPANSION PROJECT TANJONG GEMUK



Client  
**TNB**

Status  
**Completed**

Our Scopes  
**Civil & Structural Engineering**

Our firm provided end-to-end Civil and Structural Engineering services for the expansion of the power plant at Tanjung Gemuk. This project involved designing, constructing, and completing foundations for new generator sets and transformers, along with associated civil works at the existing main distribution substation.





## PROPOSED 256MW IPP SUDAN



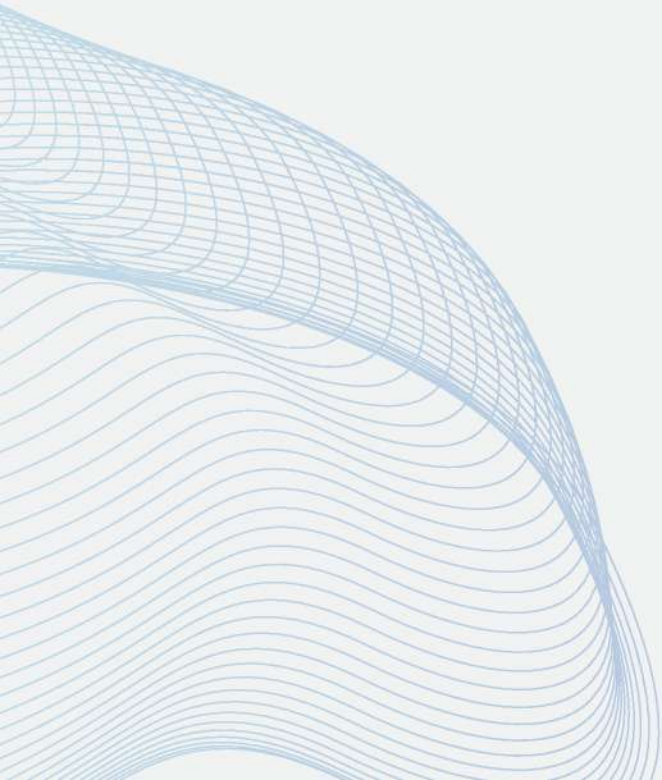
Client  
**NATIONAL ELECTRICITY COUNCIL, SUDAN**

Our Scope  
**Feasibility Studies, Plant Concept Design, Development of Performance Specification, Civil & Structural and Mechanical & Electrical Engineering, and Instrumentation requirements planning.**



Selected Projects

# URBAN PLANNING AND ENVIRONMENTAL





## MASTER PLAN OF MSC CYBERPORT CITY



Client  
**ASITAIC DEVELOPMENT  
SDN BHD**

Our firm provided comprehensive Civil and Structural Engineering services for the master planning of MSC Cyberport City in Johor, Malaysia. This visionary project aims to create a cutting-edge technology hub integrating commercial, research and development, residential, and community spaces.



## MASTER PLAN OF TECHNICAL UNIVERSITY MALAYSIA

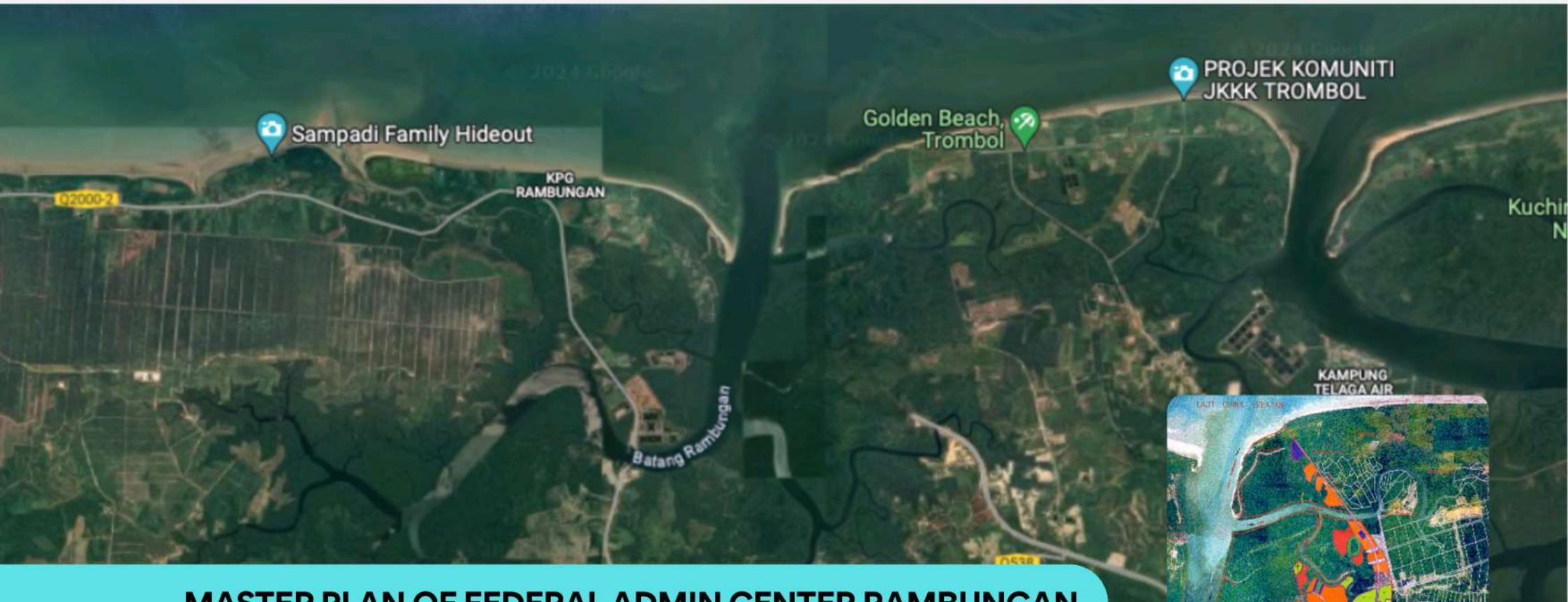


Client  
**UTEM**

Area  
**600 Acres**

Duration  
**Mac 2002 - Jun 2004**

Our firm developed the master plan for Technical University Malaysia in Melaka, embodying the institution's vision of being a catalyst for development through hands-on, experiential learning. The plan's central concept, "The Hand," symbolizes the university's commitment to practical education and its role in shaping the future.



## MASTER PLAN OF FEDERAL ADMIN CENTER RAMBUNGAN



Client  
**DEPT OF URBAN & REGIONAL PLANNING, MALAYSIA**

Duration  
**July 2000 – Feb 2001**

Area  
**2,020 acres**

Our firm led the master planning for the Federal Administrative Center in Rambungan, Kuching, Sarawak. This visionary project aims to create a self-sustaining, eco-friendly Garden City that seamlessly integrates live, work, and play elements. This project demonstrates our expertise in creating sustainable, future-focused urban environments. Our master plan for Rambungan sets a new standard for environmentally friendly city design, showcasing how modern administrative centers can harmonize with nature while providing state-of-the-art services and amenities.





## KUALA LUMPUR LOCAL PLAN 2020 STRATEGIC PLANNING ZONE 3 & 4



Client  
**KUALA LUMPUR CITY  
HALL**  
Area  
**24,222  
hectares**

Iktisas spearheaded the development of comprehensive plans for two critical Strategic Planning Zones (SPZs) within the Kuala Lumpur Local Plan 2020 framework. This pivotal project encompassed over a third of the capital's total area, shaping the future of Malaysia's most dynamic urban center.





## PROPOSED GLOPEC EXPO & CONFERENCE CENTRE, NAIROBI, KENYA



Client  
**AFRO ASIA INVESTMENT CORPORATION**

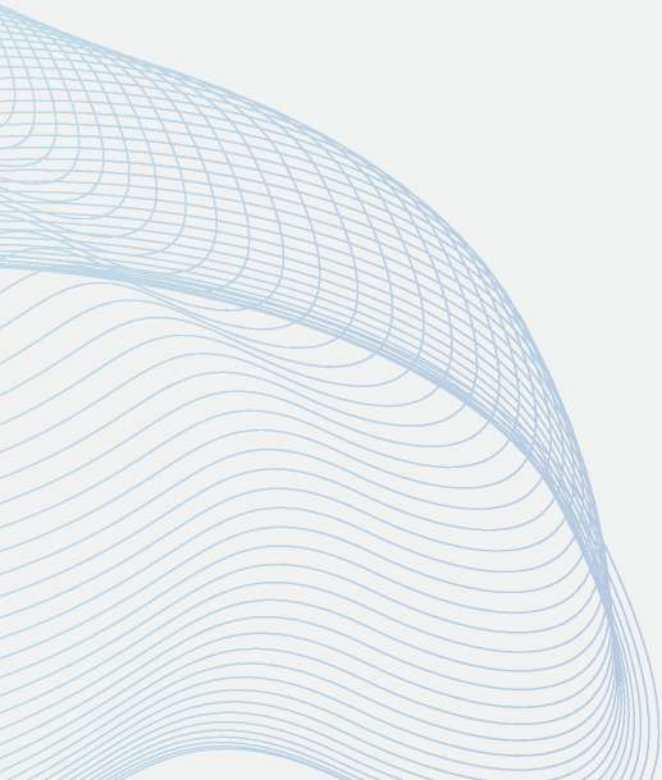
Value  
**USD350Million**

Job Scope  
**Preparation of Preliminary Project Information Memorandum (PPIM) and Master Plan**

Iktisas was commissioned to develop the Preliminary Project Information Memorandum (PPIM) and Master Plan for the ambitious GLOPEC Expo & Conference Centre in Nairobi, Kenya. This large-scale, mixed-use development spans 60 acres and aims to create a premier destination for conferences, exhibitions, healthcare, and hospitality.

Selected Projects

# RENEWABLE ENERGY





## GREEN HYDROGEN PROJECT



Client  
**NOVA RE SURIA SDN BHD**

Our Scope  
**Local Lead Consultant**

IKTISAS served as local consultant for the construction of 200MW Green Hydrogen Power Plant in Terengganu. This renewable energy project utilises green power source for the production of hydrogen gas.



## MINI HIDRO SUNGAI BETAU



Client  
**BEKKABENA  
SDN BHD**

Our Scope  
**Civil & Structure  
Engineering**

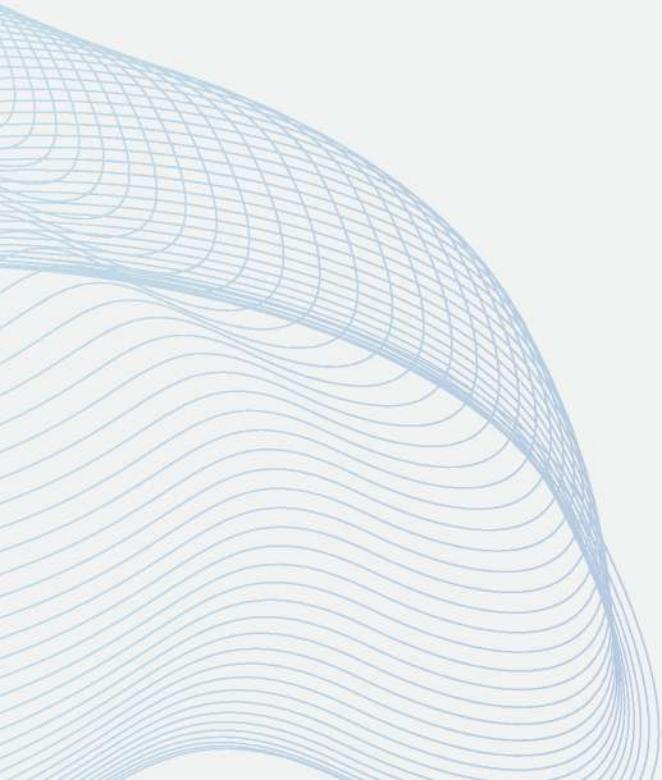
IKTISAS served as the principal consultant for the detailed design and supervision of a 3MW small hydroelectric power plant at Sungai Betau. This renewable energy project aims to harness the river's potential for sustainable power generation.

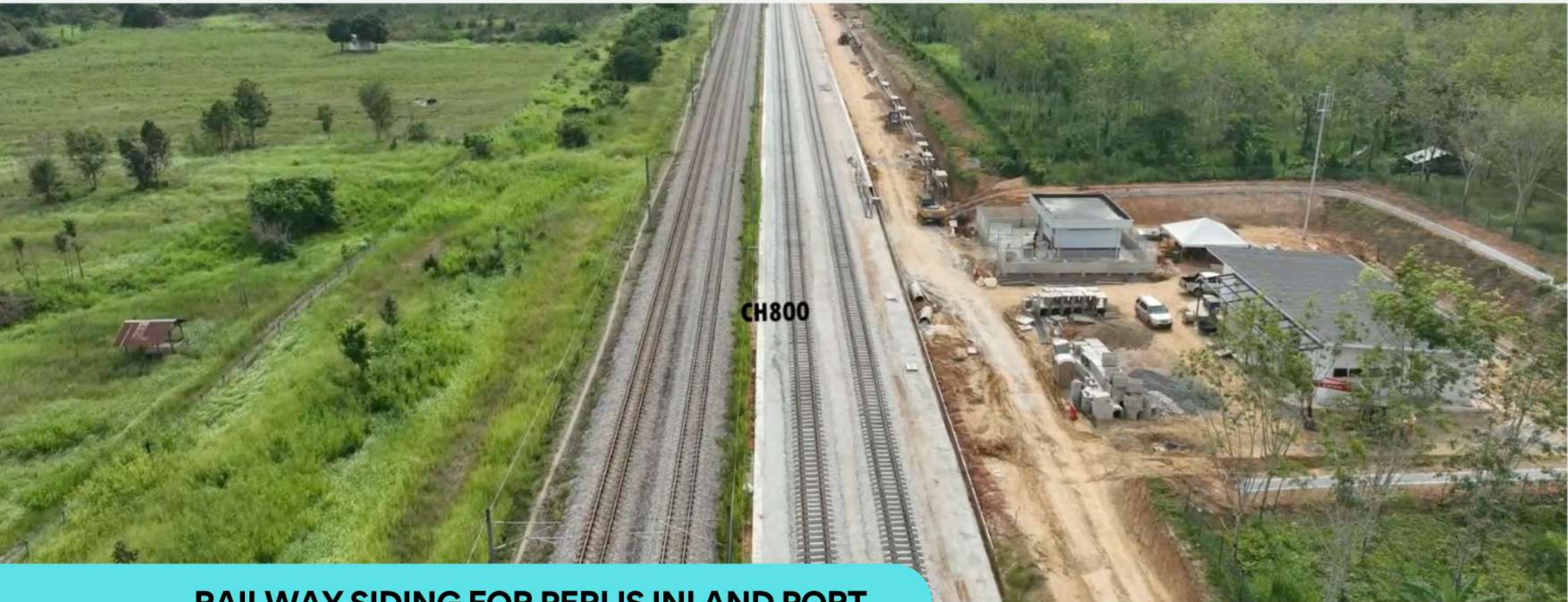
This project demonstrates our expertise in renewable energy infrastructure, showcasing our ability to integrate complex engineering solutions with environmental considerations. Our work contributes to Malaysia's green energy initiatives while addressing the technical challenges of small-scale hydropower development.



Selected Projects

# RAILWAY





## RAILWAY SIDING FOR PERLIS INLAND PORT



Client  
**NCIA**

Value  
**RM180Million**

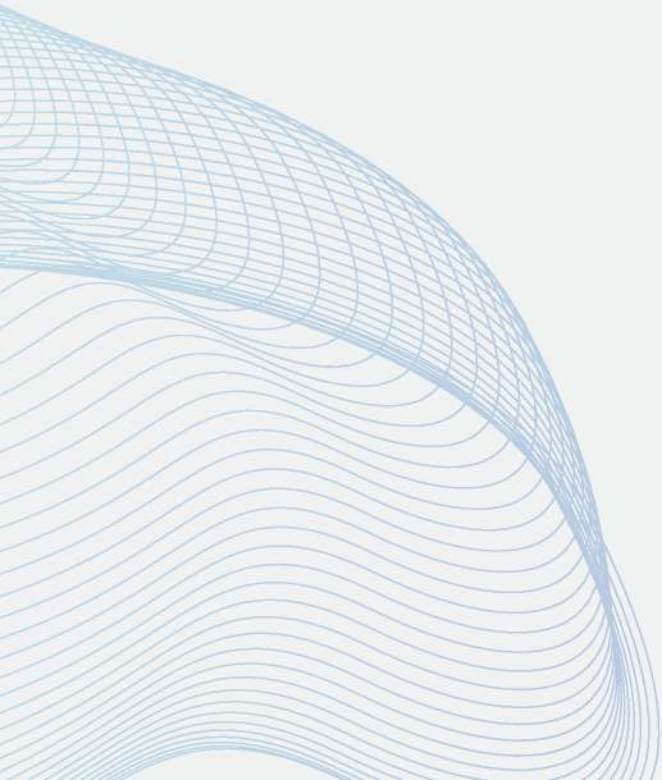
Iktisas is appointed as principal consultant to undertake the detail design and supervision for the railway siding and spur line to Perlis Inland Port in Chuping Valley, Padang Besar, Perlis.

Date of appointment  
**MAR 2020**

Status  
**Under  
Construction**

Selected Projects

# INDEPENDENT CHECK ENGINEER (ICE)





## PUSAT ASASI UITM DENGKIL



Client  
**BANK  
 PEMBANGUNAN  
 MALAYSIA BERHAD**

Date of appointment  
**Dec 2013**

Value  
**RM270Million**

Status  
**Completed**

Pusat Asasi UiTM Dengkil is an academic foundation center affiliated with Universiti Teknologi MARA (UiTM) located in Dengkil, Selangor, Malaysia. As independent checking engineers, our role involves:

- Reviewing structural designs and calculations for campus buildings
- Assessing safety compliance of laboratory facilities
- Verifying adherence to local building codes and regulations
- Conducting periodic inspections of ongoing construction or renovation projects



## PUSAT INOVASI CYBER SECURITY



Client  
**BANK  
 PEMBANGUNAN  
 MALAYSIA BERHAD**

Date of appointment  
**November 2015**

Value  
**RM290Million**

Status  
**Completed**

Our company serves as the Independent Checking Engineer for this multi-faceted government complex in Malaysia. The project encompasses:

1. Headquarters and Cyber Security Innovation Center
2. Office of the Department of Standards Malaysia
3. MYNIC office (Malaysian Network Information Centre)
4. National Security Council Headquarters



## PERUMAHAN PENJAWAT AWAM



Client  
**BANK  
 PEMBANGUNAN  
 MALAYSIA BERHAD**

Date of appointment  
**Dec 2013**

Value  
**RM270Million**

Status  
**Completed**

Our company serves as the Independent Checking Engineer for the PPA1M 650 Unit development in Precinct 11, Putrajaya. This project aims to provide affordable housing for civil servants in Malaysia's administrative capital. Our role involves:

- Reviewing and verifying structural designs and calculations
- Ensuring compliance with local building codes and regulations
- Conducting regular site inspections to monitor construction quality
- Assessing the safety and integrity of the structures
- Providing expert recommendations to improve project outcomes

# LIST OF PROJECTS

04

Project	Details	Client
<b>BOUTIQUE BUNGALOW SHOP</b>	CADANGAN TAMBAHAN DAN PERUBAHAN SERTA MENUKAR SEMENTARA KEGUNAAN BANGUNAN DARIPADA PERDAGANGAN KEPADA INSTITUSI SWASTA PADA 4 UNIT BANGUNAN (BOUTIQUE BUNGALOW SHOP)	DBKL
<b>HONDA</b>	PROPOSED APPOINTMENT OF A CIVIL & STRUCTURE ENGINEER FOR THE SLOPE STRENGTHENING WORKS OF SINKING AREA AT PDI YARD 3, HONDA FACTORY, ALOR GAJAH, MELAKA	NIPPON ROAD (M) SDN BHD
<b>RIYADH</b>	CADANGAN MEREKABENTUK, MEMBINA, MENYIAP DAN MENYELENGGARA PEJABAT CANSERI, RESIDENSI DAN BANGUNAN KEDUTAAN MALAYSIA DI RIYADH, ARAB SAUDI MELALUI KAEDAH PEMBIAYAAN "PRIVATE FINANCE INITIATIVE (PFI)" FOR MINISTRY OF FOREIGN AFFAIRS	JPZ CONSTRUCTION & ENGINEERING SDN BHD
<b>HYDRO BETAU</b>	PRINCIPAL CONSULTANCY FOR THE DETAILED DESIGN AND SUPERVISION OF 3MW SMALL HYDROELECTRIC POWER PLANT AT SUNGAI BETAU, KUALA LIPIS, PAHANG DARUL MAKMUR FOR BEKKABENA SDN BHD	BEKKABENA SDN BHD
<b>PNB KOTA SERI LANGAT</b>	CADANGAN MEMBINA DAN MENYIAPKAN 110 UNIT RUMAH TERES KOS RENDAH DI ATAS LOT PT31034-PT31143 BERSERTA 1 UNIT PENCAWANG ELEKTRIK DAN 1 UNIT DEWAN KOMUNITI DI KOTA SERI LANGAT, MUKIM TANJUNG DUA BELAS, DAERAH KUALA LANGAT, SELANGOR DARUL EHSAN	PNB DEVELOPMENT S/B
<b>KAJANG ROAD &amp; DRAIN</b>	PROPOSED MAKING GOOD OF ROAD AND DRAIN AND STREET LIGHTING INCLUDING HANDING OVER TO MAJLIS PERBANDARAN KAJANG	SIME DARBY PROPERTY S/B
<b>AL-AMIN</b>	CADANGAN MEMBINA KOMPLEKS AKADEMI AL-AMIN YANG MENGANDUNGI SEBUAH BLOK SEKOLAH RENDAH, SEBUAH BLOK SURAU SERTA TADIKA DAN BLOK SEKOLAH MENENGAH DI ATAS LOT 219, MUKIM SUNGAI BULOH, DAERAH PETALING, SELANGOR	PUSAT PENDIDIKAN AL-AMIN BERHAD
<b>Perlis Inland Port</b>	THE DETAILED DESIGN AND SUPERVISION FOR THE PERLIS INLAND PORT EXTERNAL INFRASTRUCTURE - RAILWAY TRACK, FLYOVER & BONDED ROAD FOR THE NOTHERN CORRIDOR IMPLEMENTATION AUTHORITY	NORTHERN CORRIDOR ECONOMIC REGION (NCIA)
<b>MORIB (M&amp;E)</b>	PROPOSED APPOINTMENT OF CIVIL INFRASTRUCTURE CONSULTANT FOR THE PROPOSED DEVELOPMENT OF 500 ACRES LAND LOCATED IN MORIB, MUKIM KLANANG AND MUKIM MORIB, SELANGOR	PNB DEVELOPMENT SDN BHD

Project	Details	Client
<b>HOSPITAL BALIK PULAU</b>	KERJA-KERJA PENGGANTIAN DAN NAIKTARAF SISTEM PENDAWAIAAN ELEKTRIK KERJA-KERJA LAIN BERKAITAN DI HOSPITAL BALIK PULAU, PULAU PINANG	KEMENTERIAN KESIHATAN MALAYSIA
<b>PETRAJAYA HOSPITAL, SARAWAK</b>	THE PROPOSED CONSTRUCTION OF THE 300 BEAD PETRAJAYA HOSPITAL, KUCHING, SARAWAK BY ZECON BHD	BANK PEMBANGUNAN MALAYSIA BERHAD
<b>JPS TAMPOI</b>	REKABENTUK TERPERINCI BAGI PROJEK TEBATAN BANJIR DI SUNGAI PARIT TAMPOI, MUKIM DENGKIL, DAERAH SEPANG, SELANGOR	JABATAN PENGAIRAN DAN SALIRAN NEGERI SELANGOR
<b>SG KERLING</b>	COSULTANCY SERVICES AS OWNER'S ENGINEER FOR THE PROPOSED 4.8MW SG KERLING AND 4.4MW SG BATANG KALI SMALL HYDROPOWER PROJECT, DAERAH HULU SELANGOR, SELANGOR	WORLDWIDE HOLDINGS BERHAD
<b>RESIDENTIAL P14, PUTRAJAYA</b>	CONSULTANCY SERVICES FOR THE PROPOSED RESIDENTIAL DEVELOPMENT ON PLOT 14-14, PRECINCT 14, PUTRAJAYA	PUTRAJAYA HOMES SDN BHD
<b>INDUSTRIAL P11</b>	PROPOSED LIGHT INDUSTRIAL DEVELOPMENT ON PT 4704, PRECINT 11, PUTRAJAYA	PUTRAJAYA HOMES SDN BHD
<b>PNB PORT DICKSON</b>	CADANGAN PERUMAHAN MAMPU MILIK DI ATAS LOT 458 DAN LOT 9174, PEKAN BAGAN PINANG MUKIM SI RUSA, DAERAH PORT DICKSON, NEGERI SEMBILAN	PNB DEVELOPMENT SDN BHD
<b>JPS SG MANIK</b>	REKABENTUK TERPERINCI UNTUK PROJEK MEMBINA & MENAIKTARAF INFRASTRUKTUR PENGAIRAN & SALIRAN SERTA	KEMENTERIAN PERTANIAN DAN INDUSTRI ASAS TANI
<b>MORIB (M&amp;E)</b>	PROPOSED APPOINTMENT OF CIVIL INFRASTRUCTURE CONSULTANT FOR THE PROPOSED DEVELOPMENT OF 500 ACRES LAND LOCATED IN MORIB, MUKIM KLANANG AND MUKIM MORIB, SELANGOR	PNB DEVELOPMENT SDN BHD

Project	Details	Client
<b>ICE CYBERJAYA</b>	THE DEVELOPMENT OF THE HEADQUARTERS OF CYBER SECURITY MALAYSIA, MAJLIS KESELAMATAN NEGARA, JABATAN STANDARD MALAYSIA AND MYINC BERHAD IN CYBERJAYA, SELANGOR Appointment as the Independent Checking Engineer (ICE)	BANK PEMBANGUNAN MALAYSIA BERHAD
<b>ICE (PPA1M)</b>	APPOINTMENT AS THE INDEPENDENT CHECKING ENGINEER (ICE)	BANK PEMBANGUNAN MALAYSIA BERHAD
<b>ICE UiTM DENGKIL</b>	APPOINTMENT AS THE INDEPENDENT CHECKING ENGINEER (ICE)	BANK PEMBANGUNAN MALAYSIA BERHAD
<b>BANDAR SULTAN SULEIMAN</b>	CADANGAN PEMBINAAN 163 UNIT RUMAH TERES 2 TINGKAT DI FASA 4A, BANDAR SULTAN SULEIMAN, KLANG, SELANGOR	PERBADANAN KEMAJUAN NEGERI SELANGOR
<b>NIZWA MOSQUE</b>	DESIGN AND SUPERVISION SERVICES FOR THE PROPOSED MOSQUE AT THE UNIVERESITY OF NIZWA NEW CAMPUS, SULTANATE OF OMAN	NIZWA UNIVERSITY, OMAN
<b>NOISE BARRIER PRESINT 12</b>	CONSTRUCTION AND COMPLETION OF NOISE MASONRY WALL BARRIER AT GDC PLANT 1 FOR GDC PUTRAJAYA SDN BHD, PRECINCT 12, PUTRAJAYA	GAS DISTRICT COOLING (PUTRAJAYA) SDN BHD
<b>AN-NUR SG MERAB</b>	PROPOSED AN-NUR NURSING HOME PROJECT, SG. MERAB, BANGI	MEDIC IG HOLDINGS SDN BHD
<b>DORCE</b>	THE PROPOSED TEMPORARY COMMONCAMP FACILITIES (Package20A) RAPID PROJECT, JOHOR DARUL TAKZIM	DORCE CONSTRUCTION MALAYSIA SDN BHD
<b>JAYAZIRA (PPA1M)</b>	THE DEVELOPMENT AND CONSTRUCTION OF 650 RESIDENTIAL UNITS IN PRECINCT 11, PUTRAJAYA UNDER THE PERUMAHAN PENJAWAT AWAM 1 MALAYSIA (PPA1M)	PEMBINAAN JAYAZIRA SDN BHD

Project	Details	Client
<b>KUARTERS MASJID</b>	CADANGAN REKA & BINA 6 UNIT RUMAH KAURTERS UNTUK KAKITANGAN MASJID BANDAR SERI PUTRA BANGI, MUKIM KAJANG, DAERAH HULU LANGAT, SELANGOR D. EHSAN	GABUNGMAS SDN BHD
<b>DASH HIGHWAY</b>	DETAILED DESIGN CONSULTANT SERVICES IN CONNECTION WITH THE DESIGN AND SUPERVISION WORKS FOR THE PROPOSED DAMANSARA-SHAH ALAM ELEVATED EXPRESSWAY (DASH) (SECTION B) – PACKAGE B2	Z Aidun-Leeng SDN BHD
<b>WORLDWIDE LANDFILL PARK</b>	CADANGAN PEMBANGUNAN BERCAMPUR DI ATAS LOT 13466, MUKIM BUKIT BARU, DAERAH MELAKA TENGAH, HANG TUAH JAYA, MELAKA BANDARAYA BERSEJARAH UNTUK TETUAN TPG DEVELOPMENT SDN. BHD.	JANA LANDFILL SDN BHD
<b>PANGSAPURI HULU LANGAT</b>	CADANGAN PEMBANGUNAN 2 BLOK PANGSAPURI SERVIS 28 TINGKAT DI ATAS 6 TINGKAT PODIUM BESERTA 4 TINGKAT BASEMENT ARAS BAWAH TANAH YANG MENGANDUNGI BLOK A, BLOK B, UNIT KEDAI DAN KEMUDAHAN LAIN DIA TAS LOT 1150 MUKIM HULU LANGAT, DAERAH HULU LANGAT, SELANGOR	KUMPULAN SAKATA SDN BHD
<b>BERNAM JAYA</b>	CADANGAN MEMBINA DAN MENYIAPKAN 48 UNIT KEDAI PEJABAT 2 DAN 3 TINGKAT BESERTA SEBUAH PENCAWANG ELEKTRIK DI FASA 7, LAMAN 1, BERNAM JAYA, SELANGOR DARUL EHSAN	PERBADANAN KEMAJUAN NEGERI SELANGOR
<b>SEPANG ROOF OVER PIT BUILDING</b>	PROPOSED NEW ROOF OVER PIT BUILDING AT SEPANG INTERNATIONAL CIRCUIT	SNO ARCHITECTS SDN BHD
<b>UIA MIXED DEVELOPMENT</b>	PROPOSED UIA MIXED DEVELOPMENT	GUNUNG CAPITAL BERHAD
<b>KOTA BAYU EMAS</b>	PROPOSED CONSTRUCTION AND COMPLETION OF 92 UNITS DOUBLE STOREY TERRACE HOUSE, PHASE A12, KOTA BAYUEMAS, MUKIM KLANG, DAERAH KLANG, SELANGOR	I&P KOTA BAYUEMAS SDN BHD
<b>UiTM DENGKIL</b>	THE DEVELOPMENT OF PUSAT ASASI UNIVERSITI TEKNOLOGI MARA IN DENGKIL, SELANGOR	KAS ENGINEERING SDN BHD (KESB)

Project	Details	Client
<b>KOTA PUTERI, RAWANG</b>	CADANGAN MEMBINA 30 UNIT RUMAH SUPERLINK (24'X80') FASA 2C DI SEKSYEN 8, KOTA PUTERI, MUKIM RAWANG	PERBADANAN KEMAJUAN NEGERI SELANGOR
<b>ENSTEK MAHAWANGSA</b>	PROPOSED DEVELOPMENT OF RESIDENTIAL DEVELOPMENT (R1, R2 AND R3), MAHAWANGSA @ ENSTEK ON LOT 28842, 28843 AND 28844, MUKIM LABU, DAERAH SEREMBAN, N. SEMBILAN	THP ENSTEK DEVELOPMENT SDN BHD
<b>KBCC MASTER PLAN STUDY</b>	PRINCIPAL CONSULTANT TO CARRY OUT THE KOTA BHARU CITY CENTRE (KBCC) MASTER PLAN STUDY (INTEGRATED TRAFFIC AND TRANSPORT) FOR EAST COAST ECONOMIC REGION DEVELOPMENT COUNCIL (ECERDC)	IKTISAS PLANNERS S/B
<b>JERAM LANDFILL</b>	DEVELOPMENT OF RENEWABLE ENERGY POWER GENERATION PLANT BY USING LANDFILL GAS AT JERAM SANITARY LANDFILL, KUALA SELANGOR, SELANGOR DARUL EHSAN (M&E WORKS)	WORLDWIDE LANDFILLS SDN BHD
<b>SETAI BUNGALOW</b>	MOCK UP SHOW VILLA FOR THE SETAI RESIDENCES AND CLUB, BANDAR ENSTEK	DAVANAM CONSTRUCTION
<b>KTCC</b>	THE APPOINTMENT OF A PRINCIPAL CONSULTANT FOR THE DETAILED DESIGN AND SUPERVISION OF INFRASTRUCTURE WORKS FOR MUARA UTARA & MUARA SELATAN DEVELOPMENT AT KUALA TERENGGANU CITY CENTRE (KTCC), FOR THE EAST COAST ECONOMIC REGION DEVELOPMENT COUNCIL (ECERDC)	EAST COAST ECONOMIC REGION DEVELOPMENT COUNCIL (ECERDC)
<b>JETTY TOK BALI</b>	PRIVATE JETTY AND PORT AT TOK BALI, PRE-FEASIBILITY STUDY PROPOSAL	GUNUNG CAPITAL BERHAD
<b>MASJID BANGI</b>	CADANGAN MEMBINA SEBUAH MASJID DAN KEMUDAHAN LAIN DI BANDAR SERI PUTRA, BANGI, MUKIM KAJANG, DAERAH HULU LANGAT, SELANGOR DARUL EHSAN	JABATAN AGAMA ISLAM SELANGOR

Project	Details	Client
<b>HELICOPTER HANGAR (PENGKALAN CHEPA)</b>	CADANGAN MEMBINA DAN MENYIAPKAN 'HELICOPTER HANGAR" DI SEBAHAGIAN KAWASAN LAPANGAN TERBANG SULTAN ISMAIL PETRA, MUKIM PENGKALAN CHEAP, DAERAH KEMUMIN, SEKSYEN 40, KOTA BHARU, KELANTAN DARUL NAIM	WESTSTAR CONSTRUCTION SDN BHD
<b>KOOP UTM JOHOR</b>	PEMBINAAN PUSAT KOMERSIL KOOP UTM (PKUTM) DI ATAS TANAH HS(D) 17466, LOT PTD 19029, MUKIM SENAI/KULAI, DAERAH KULAIJAYA, JOHOR	MISI EUREKA SDN BHD
<b>EPSOM KOLEJ</b>	PROPOSED DEVELOPMENT OF EPSOM COLLEGE IN BANDAR ENSTEK, NEGERI SEMBILAN	EPSOM COLLEGE (M) SDN BHD
<b>KOMPLEKS BALAI POLIS SRI HARTAMAS</b>	CADANGAN PEMBINAAN BALAI POLIS SRI HARTAMAS, BROCKFIELDS, KUALA LUMPUR	JABATAN KERJA RAYA IBU PEJABAT JKR MALAYSIA
<b>SEK KEDAH</b>	CADANGAN MEMBINA DAN MENYIAPKAN PROJEK PENDIDIKAN MENGGUNAKAN IBS SECARA KONVENSIONAL DI NEGERI KEDAH (IBS Method)	KEMENTERIAN PELAJARAN MALAYSIA
<b>MASJID AS-SYAKIRIN</b>	PRINCIPAL CONSULTANT FOR THE Proposed Construction and Completion of the Extension Works for As-Syakirin Mosque at KLCC Park, Kuala Lumpur City Centre, Wilayah Persekutuan Kuala Lumpur	AQIDEA ARCHITECT
<b>KAJANG BY PASS</b>	CADANGAN MEMBINA JALAN DARI LEBUHRAYA KAJANG BY-PASS KE LOT 990, MUKIM CHERAS, DAERAH HULU LANGAT, SELANGOR	MAJLIS PERBANDARAN KAJANG
<b>PPU SERI UTAMA</b>	PROJEK PEMBINAAN PENCAWANG PEMBAHAGIAN UTAMA (PPU) BUKIT AMAN DAN SERI UTAMA NO.1 KUALA LUMPUR	TENAGA NASIONAL BERHAD
<b>SEK JOHOR</b>	CADANGAN PROJEK PEMBINAAN SECARA ISB BAGI 36 BUAH BLOK TAMBAHAN SEKOLAH DAN 4 BUAH SEKOLAH BARU DI NEGERI JOHOR DARUL TAKZIM	KEMENTERIAN PELAJARAN MALAYSIA

Project	Details	Client
<b>MELAWATI URBAN</b>	MELAWATI URBAN RENEWAL, PROPOSED COLLABORATION BETWEEN NPMB, MPAJ AND THE SELANGOR STATE GOVERNMENT	NEGARA PROPERTIES
<b>TUANKU JAAFAR GOLF &amp; COUNTRY RESORT</b>	PROPOSED DEVELOPMENT OF SERVICE APARTMENT IN TUANKU JAAFAR GOLF & COUNTRY RESORT	DALTON INVESTMENT
<b>UIA DENTISTRY</b>	PROPOSED RENOVATION & COMPLETION OF KULIYAH OF DENTISTRY FOR INTERNATIONAL ISLAMIC UNIVERSITY MALAYSIA KUANTAN, PAHANG	UNIVERSITI ISLAM ANTARABANGSA MALAYSIA
<b>PENANG SECOND BRIDGE – P1</b>	PENANG 2ND BRIDGE CROSSING PACKAGE 1 – BATU KAWAN EXPRESSWAY INCLUDING ACCESS ROADS TO TOLL PLAZA AND REST AND SERVICE AREA	JAMBATAN KEDUA SDN BHD
<b>RESURFACING SEPANG CIRCUIT</b>	PENANG 2ND BRIDGE CROSSING PACKAGE 1 – BATU KAWAN EXPRESSWAY INCLUDING ACCESS ROADS TO TOLL PLAZA AND REST AND SERVICE AREA	NIPPON ROAD (M) S/B
<b>RTD GOMBAK</b>	RANCANGAN TEMPATAN DAERAH GOMBAK	JPBD
<b>TANJUNG GEMUK</b>	CADANGAN MEREKABENTUK, MEMBINA DAN MENYIAPKAN ASAS GENSET DAN ALAT UBAH SERTA KERJA-KERJA AWAM DI TAPAK PENCAWANG PEMBAHAGIAN UTAMA SEDIADA, TANJUNG GEMUK, ROMPIN, PAHANG DARUL MAKMUR	MASASAKI OIL CO. SDN BHD
<b>TANJUNG BIN</b>	PROPOSED DEVELOPMENT FOR THE CONSTRUCTION OF TANK FARM, JETTY TERMINAL FOR LOADING AND OFF LOADING FACILITIES AT PTD 1857, TANJUNG BIN, JOHOR (OPP. PELABUHAN TANJUNG PELEPAS)	MASASAKI OIL CO. SDN BHD
<b>AL-AMIN GOMBAK</b>	CADANGAN PEMBANGUNAN SURAU SEKOLAH MENENGAH ISLAM AL-AMIN DI ATAS LOT 1078, BATU 8, ¾ MUKIM SETAPAK, GOMBAK	SEK MEN ISLAM AL-AMIN

Project	Details	Client
<b>SEK MEN TG CHAT</b>	MEMBINA DAN MENYIAPKAN SEKOLAH MENENGAH KEBANGSAAN TANJUNG CHAT, DAERAH KOTA BHARU, KELANTAN DARUL NAIM YANG MENGANDUNGI 24 BILIK DARJAH DAN KEMUDAHAN BERKAITAN	KEMENTERIA PELAJARAN MALAYSIA
<b>PULAU KETAM</b>	PERLANTIKAN SEBAGAI JURUTERA PERUNDING BAGI KERJA-KERJA AWAM PEMBINAAN BANGUNAN JANAKUASA, BANGUNAN SUIS DAN TAPAK TALIAN 11KV DI PULAU KETAM, SELANGOR	TENAGA NASIONAL BERHAD
<b>PASAR TAPAH</b>	CADANGAN MEMBINA DAN MENYIAPKAN KOMPLEKS PASAR BARU TAPAH, CADANGAN MEMBINA DAN MENYIAPKAN ASTAKA DI PADANG MAJLIS DAERAH TAPAH, CADANGAN MEMBINA DAN MENAIKTARAF KOMPLEKS BANGUNAN RUMAH REHAT TAPAH, PERAK DARUL RIDZUAN	MAJLIS DAERAH TAPAH
<b>RUMAH KAKITANGAN PENTING</b>	CADANGAN PEMBANGUNAN KOMPLEKS PERUMAHAN KAKITANGAN PENTING, KAMPUS TETAP KOLEJ UNIVERISTI ISLAM MALAYSIA DI ATAS LOT TANAH KERAJAAN, BANDAR BARU NILAI, NEGERI SEMBILAN	KOLEJ UNIVERSITI ISLAM MALAYSIA
<b>HOTEL TERMINAL ONE</b>	CADANGAN PEMBINAAN HOTEL 13 TINGKAT DI TERMINAL 1, DI BANDAR SEREMBAN, NEGERI SEMBILAN	PANJI TIMOR SDN BHD
<b>BLUEPRINT RIVER</b>	THE STUDY ON A BLUEPRINT FOR RIVER MANAGEMENT IN MALAYSIA (FASA 1)	JABATAN PENGAIRAN DAN SALIRAN MALAYSIA
<b>BLT</b>	Cadangan PEMBANGUNAN Kem Batalion 4 PGA Semenyih dan Balai Polis Di Atas Lot 3821, Mukim Semenyih, Selangor	PEMBINAAN BLT SDN BHD
<b>LPT 2</b>	MEMBINA LEBUHRAYA PANTAI TIMUR FASA 2: PAKEJ 9A2, TERENGGANU	JABATAN KERJA RAYA MALAYSIA
<b>RTK KUALA LUMPUR</b>	PENYEDIAAN PELAN TEMPATAN KUALA LUMPUR – PELAN CADANGAN ZON STRATEGIK WANGSA MAJU-MALURI & SENTUL-MANJALARA (2004/G010)	IKTISAS PLANNES SDN BHD

Project	Details	Client
<b>POWER PLANT, INDONESIA</b>	CONSULTING ASSIGNMENT FOR THE COAL FIRES POWER PLANT PROJECT, INDONESIA	ISLAMIC CORPORATION FOR THE DEVELOPEMNT OF THE PRIVATE SECTOR, INDONESIA
<b>MAKMAL KUIM</b>	PEMBANGUNAN KAMPUS TETAP KOLEJ UNIVERSITI ISLAM MALAYSIA, BANDAR BARU NILAI, N. SEMBILAN	KOLEJ UNIVERSITI ISLAM MALAYSIA
<b>TABUNG HAJI TEMERLOH</b>	CADANGAN MEMBAIKPULIH BANGUNAN TABUNG HAJI TEMERLOH, PAHANG	LEMBAGA TABUNG HAJI
<b>TAMAN PELANGI</b>	CADANGAN PEMBANGUNAN PERUMAHAN DAN PERDAGANGAN DI ATAS SEBAHAGIAN LOT NO. 14414, TAMAN PELANGI, MUKIM SETAPAK, KUALA LUMPURAN MEMBAIKPULIH BANGUNAN TABUNG HAJI TEMERLOH, PAHANG	HAZRAT, HASHIM & PARTNERS
<b>MENARA INTAN</b>	MENARA INTAN LANGKAWI	HBA DEVELOPMENT BERHAD
<b>KUKUM</b>	ENGINEERING CONSULTANCY SERVICES FOR CADANGAN PEMBANGUNAN KOLEJ UNIVERSITI KEJURUTERAAN UTARA MALAYSIA (KUKUM)	CRIMSON NETWORK SDN BHD
<b>JALAN BUKIT BETONG</b>	NAIKTARAF JALAN DARI BUKIT BETOONG KE KAMPUNG AUR GADING, LIPIS (JKR PAHANG)	JKR PAHANG
<b>PROJEK JALAN KAMPUNG</b>	MEMBINA DAN MENYIAPKAN PROJEK JALAN KAMPUNG (PJK) MENGIKUT KAEDAH ALTERNATIF BAGI NEGERI PERAK TAHUN 2003	KEMENTERIAN PEMBANGUNAN LUAR BANDAR MALAYSIA
<b>JAMBATAN DI JALAN PERSEKUTUAN</b>	PROGRAM MENILAI/MEMBAIKI/MENGGANTI JAMBATAN DI JALAN PERSEKUTUAN NEGERI PAHANG	ROADBASE BUILDER SDN BHD UNTUK JABATAN KERJA RAYA

Project	Details	Client
<b>SEKOLAH RANTAU PANJANG</b>	PELAKSANAAN PROJEK SEKOLAH KEBANGSAAN RANTAU PANJANG II, PASIR MAS, KELANTAN UNTUK KEMENTERIAN PENDIDIKAN MALAYSIA	KEMENTERIAN PENDIDIKAN MALAYSIA, BHG PEMBANGUNAN, PENSWASTAAN DAN BEKALAN
<b>SEK SERI WANGI</b>	PELAKSANAAN PROJEK SEKOLAH SEKOLAH SERI WANGI, GUA MUSANG, KELANTAN UNTUK KEMENTERIAN PENDIDIKAN MALAYSIA	KEMENTERIAN PENDIDIKAN MALAYSIA, BHG PEMBANGUNAN, PENSWASTAAN DAN BEKALAN
<b>UIA GOMBAK</b>	CADANGAN PEMBANGUNAN ASRAMA KEDIAMAN PELAJAR PEREMPUAN KELAPAN (8), UNIVERSITI ISLAM ANTARABANGSA, MALAYSIA, KAMPUS GOMBAK, SELANGOR DARUL EHSAN	UNIVERSITI ISLAM ANTARABANGSA
<b>KUTKM</b>	PROJEK PEMBANGUNAN PELAN INDUK KAMPUS TETAP KOLEJ UNIVERSITI TEKNIKAL KEBANGSAAN MALAYSIA (KUTKM) DI MUKIM DURIAN TUNGGAL, DAERAH ALOR GAJAH, MELAKA	KUMPULAN SENIREKA SDN BHD
<b>PAVEMENT REHABILITATION CHANGKAT JERING</b>	PROPOSED PAVEMENT REHABILITATION WORKS FROM KM232 TO KM229.50 (SOUTHBOUND) AND KM274.5 TO KM271.5 (SOUTHBOUND) SECTION N5) OF THE CHANGKAT JERING TO IPOH EXPRESSWAY	PROJEK LEBUHRAYA UTARA-SELATAN BHD LEVEL 17, MENARA 1 FABER TOWERS
<b>HOSPITAL CAMERON</b>	THE DESIGN, CONSTRUCTION, EQUIPPING AND COMMISSIONING OF THE PROPOSED HOSPITAL CAMERON HIGHLANDS, PAHANG DARUL MAKMUR	MERCUMAJU SDN BHD UNTUK JABATAN KERJA RAYA (JKR)
<b>MULTIMEDIA UNIVERSITY CAMPUS, CYBERJAYA</b>	PROJECT MANAGEMENT FOR THE MULTIMEDIA UNIVERSITY CAMPUS, CYBERJAYA	TELEKOM MALAYSIA BERHAD
<b>CHANGKAT JERING-TAIPING ROAD</b>	NAIKTARAF LALUAN 1 JALAN CHANGKAT JERING – TAIPING	JABATAN KERJA RAYA CAWANGAN JALAN
<b>HOSPITAL SUNGAI PETANI</b>	THE DEVELOPMENT OF HOSPITAL SUNGAI PETANI, KEDAH DARUL AMAN FOR MONISTRY OF HEALTH CONSULTANCY SERVICES	KEMENTERIAN PENDIDIKAN MALAYSIA

Project	Details	Client
<b>MENAIKKAN TARAF JALAN SERDANG-PUCHONG</b>	CADANGAN MENAIKKAN TARAF JALAN DARI SERDANG KE PUCHONG (B16) SELANGOR DARUL EHSAN	ALHASAN CORPORATION SDN BHD
<b>MSN BUKIT JALIL</b>	KOMPLEKS SUKAN NEGARA	KEMENTERIAN BELIA DAN SUKAN
<b>RACING CIRCUIT, SEPANG</b>	APOINTMENT OF CONSULTANT FOR DESIGN, SUPERVISION AND COMMISSINING OF THE MALAYSIAN FORMULA ONE RACING CIRCUIT FACILITY AND ASSOCIATED WORKS AT KLIA SEPANG, SELANGOR	MALAYSIA AIRPORTS BERHAD
<b>TANJUNG RHU, LANGKAWI</b>	FOUR SEASONS RESORT, LANGKAWI, KEDAH	MAS PROPERTY DEVELOPMENT
<b>UNIVERSITI TEKNOLOGI PETRONAS</b>	APPOINTMENT OF ENGINEERING CONSULTANT FOR PACKAGE 4 AND 5 (HOUSING, CULTURAL CENTRE, CONFERENCE CENTRE, MOSQUE AND SPORT COMPLEX) OF THE PROPOSED UNIVERSITI	UNIVERSITI TEKNOLOGI PETRONAS
<b>HOSPITAL SLIM RIVER</b>	CADANGAN HOSPITAL SLIM RIVER 225 BEDS HOSPITAL ON 20 HECTARE LAND	UNIT KERJA PERUBATAN & KESIHATAN
<b>MASJID SHAH ALAM SEKSYEN 27</b>	CADANGAN MEMBINA DAN MENYIAPKAN SEBUAH MASJID BARU DI SEKSYEN 27, SHAH ALAM	JABATAN KERJA RAYA
<b>JALAN LIPIS – CAMERON</b>	PROJEK JALAN DARI KG BERCHANG, LIPIS KE RINGLET, CAMERON HIGHLANDS, PAHANG	JABATAN KERJA RAYA MALAYSIA
<b>TAMAN ORKID PERDANA</b>	CADANGA NAIKTARAF TAMAN ORKID, TAMAN BUNGA RAYA & BUNGA-BUNGAAN DAN TAN KONSERVATIF DI TAMAN BOTANI PERDANA, KUALA LUMPUR	DEWAN BANDARAYA KUALA LUMPUR



# CERTIFICATES & AWARDS

05

## Certificates

These certifications serve as a testament to our team's dedication, technical expertise, and adherence to the highest standards of professionalism and quality assurance. They validate our capabilities in delivering cutting-edge civil engineering solutions that meet and exceed the stringent requirements set forth by the industry's governing authorities.

### Lembaga Jurutera Malaysia

#### Perakuan Pendaftaran Sebagai Amalan Jurutera Perunding

(Barang F)

**AKTA PENDAFTARAN JURUTERA 1967  
PERATURAN-PERATURAN PENDAFTARAN JURUTERA 1990  
(PERATURAN 35)**

No. Perakuan : **2595-1360-00000-BC-306**

**LEMBAGA JURUTERA MALAYSIA**

**PERAKUAN PENDAFTARAN SEBAGAI AMALAN JURUTERA PERUNDING**

INI ADALAH UNTUK MEMPERAKUI BAHAWA

Nama : **Perbadanan Korporat  
IKTISAS INGENIEURS SDN. BHD.**

Alamat : **NO 342B & 343B MELAWATI URBAN 1  
LORONG KEDAH TAMAN MELAWATI  
53100 KUALA LUMPUR  
WILAYAH PERSEKUTUAN (K.L.)  
MALAYSIA**

Cawangan Kejuruteraan: **\*\* CIVIL, MECHANICAL, ELECTRICAL \*\***

yang telah mematuhi kebendak-kehendak Akta Pendaftaran Jurutera 1967 dan telah membayar fee pendaftaran didaftarkan sebagai suatu AMALAN JURUTERA PERUNDING dalam cawangan kejuruteraan yang dinyatakan di atas tertakluk kepada syarat-syarat yang dinyatakan di bawah.

Syarat-syarat:

Perakuan pendaftaran ini akan habis tempoh pada **31 Disember 2025**






(DATUK WIRA Ir. ROSLAN BIN ISMAIL)  
Yang Dipertua



(Ir. Dr. MEGAT ZUHARY MEGAT TAUDDIN)  
Pendaftar

### Kementerian Kewangan Malaysia

#### Sijil Akuan Pendaftaran Firma Perunding



**KEMENTERIAN KEWANGAN MALAYSIA  
SIJIL AKUAN PENDAFTARAN FIRMA PERUNDING**

N.O. SIJIL : 311739314484004529  
 N.O. RUJUKAN PENDAFTARAN : 465-00000942  
 TEMPOH SAH LAKU : 04/11/2024 - 05/12/2027

Bahawa dengan ini diperakui syarikat :  
 IKTISAS INGENIEURS SDN. BHD. ( 253362-V )  
 NO. 342B-343B, MELAWATI URBAN  
 1, LORONG KEDAH  
 TAMAN MELAWATI  
 W.P. KUALA LUMPUR  
 53100 MUKIM KUALA LUMPUR  
 WILAYAH PERSEKUTUAN KUALA LUMPUR, MALAYSIA

Telah berdaftar dengan Kementerian Kewangan Malaysia dalam bidang bekalan/perkhidmatan di bawah sektor, bidang dan sub-bidang seperti di Lampiran A. Keluasan ini adalah tertakluk kepada syarat-syarat seperti yang dinyatakan di Lampiran B. Individu yang diberi kuasa oleh syarikat bagi urusan perolehan Kerajaan adalah seperti berikut :

DATO IR HUSNI BIN HUSSAIN	601212035023	DIRECTOR
IR SYED ABDULLAH BIN SYED AHMAD	721125105333	DIRECTOR
IR WAN AHMAD NIZAR BIN ZAKARIA	380831055815	DIRECTOR
IR SHAHRIMAN BIN IBRAHIM	601110055963	TECHNICAL DIRECTOR
ENCIK RAJA ABDUL WAFF BIN RAJA ABDULLAH	82912845179	IKTISAS INGENIEURS SDN. BHD.
KAPTEN AZMAN BIN AHMAD	640127016145	PROJECT MANAGER
ENCIK MD ZAMRI BIN MD ISMAIL	758612016553	IKTISAS INGENIEURS SDN. BHD.
PUAN ASMA BINTI ZAHIR	830619145362	IKTISAS INGENIEURS SDN. BHD.
PUAN ALINA BINTI IDRIS	60402045446	HUMAN RESOURCE

11

DATO' INDERA AB RAHIM BIN AB RAHMAN  
 Bahagian Perolehan Kerajaan  
 i.p. Ketua Setiausaha Perbandarajaan  
 Kementerian Kewangan Malaysia

Tarikh Berdaftar Dengan Kementerian Kewangan Malaysia : 04/11/2024

(Sijil ini adalah cetakan komputer dan tidak memerlukan tandatangan)

## Awards

IKTISAS ENGENIEURS has consistently demonstrated excellence in the civil engineering realm, earning numerous accolades and recognitions from esteemed government bodies. Our unwavering commitment to delivering innovative and sustainable solutions has garnered widespread acclaim, solidifying our position as a leader in the industry.

**CIDB MALAYSIA**  
**The Best Project Award**



**Road Engineering Association of Asia & Australia**  
**Winner MINO BEST PROJECT AWARD**



**Jabatan Kerja Raya Malaysia**  
**NAIB JOHAN**



**Professional Services Development Corporation**  
**Appreciation Award**



**Road Engineering Association of Malaysia**  
**Excellence Award**



## Night Awards

### MCIER 2017

In recognition of our exceptional engineering prowess and commitment to excellence, IKTISAS ENGENIEURS was bestowed with the prestigious Night Award of Engineering at the Malaysian Construction Industry Excellence Awards (MCIER) 2017. Organized by the Construction Industry Development Board (CIDB), a regulatory body under the Ministry of Works, this coveted accolade is a testament to our unwavering dedication to pushing the boundaries of engineering innovation.



## Our Client





**301A & 302A, Lorong Selangor, Taman Melawati,  
53100 Kuala Lumpur, Wilayah Persekutuan**

Call us  
**+603 4149 6195**  
**+603 4162 5731**

Email us  
**docu@iisbproject.com**

Visit our website  
**iktisas.com.my**